

BULDOCK

FLOATING DOCKS



**Quality Modular
Pontoon Systems**

PRODUCT CATALOGUE

CUSTOMERS PRICE LIST

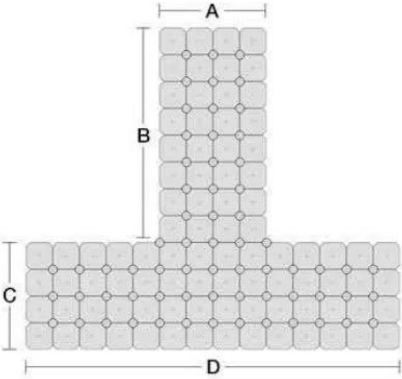
01.2025

BUILD DOCK

FLOATING DOCKS

2D Configurator

Shoreline - T shape



Dock Dimensions
**in meters*

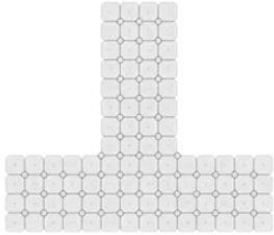
A * m

B * m

C * m

D * m

Gray Beige Blue Orange



3D Configurator

 **3D CONFIGURATOR**

NEW FEATURE



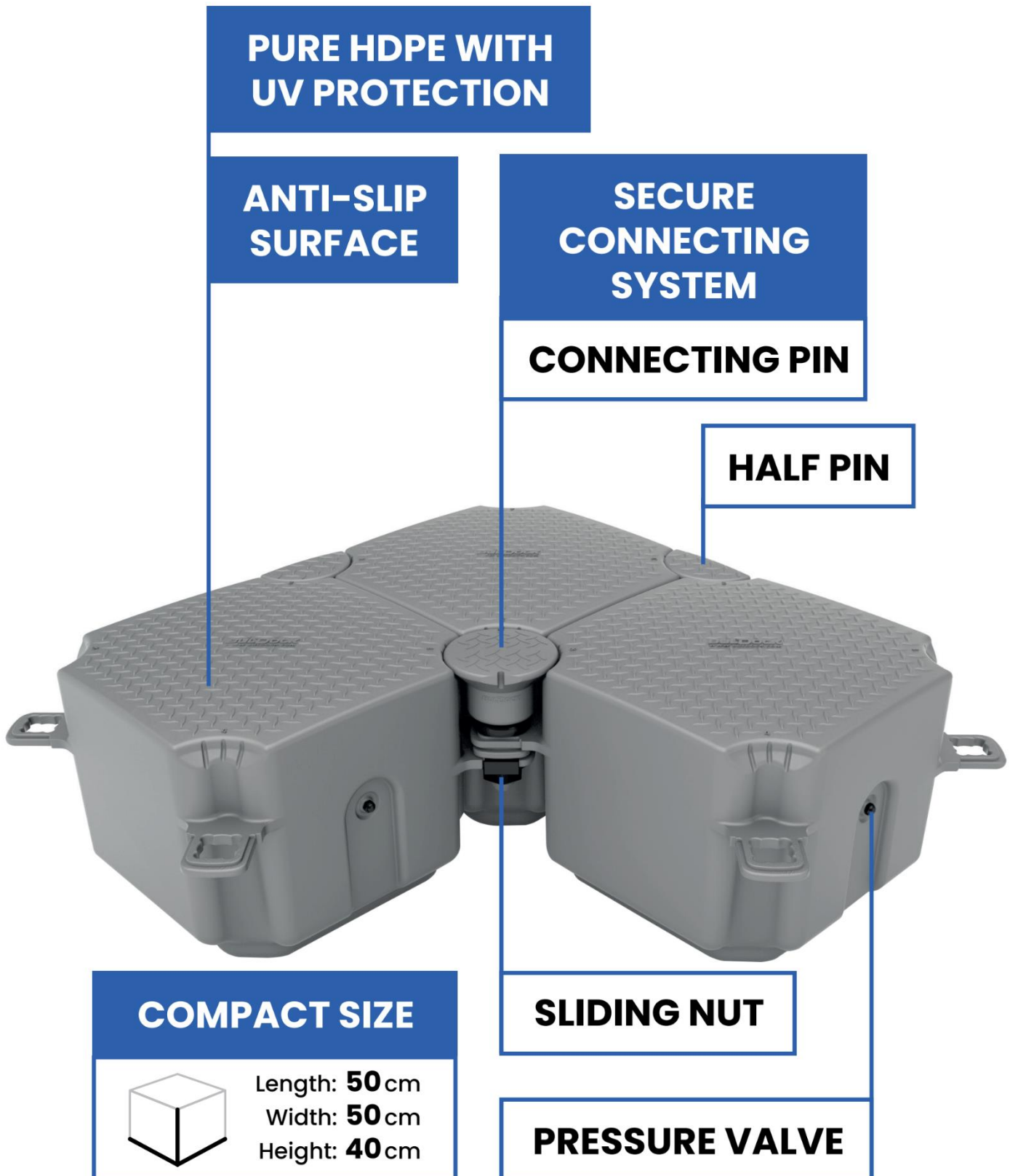
Go to the Configurator



The System

Our floating system is designed to be simple: the blocks are held together strongly and firmly by specially designed mounting screws. All pieces are lightweight and provide easy handling.

The cubes are suitable for any shoreline. They are adaptable and can be assembled to create any shape and size - no limit for the configuration options.



Cube H40



Material / Composition: High-density Polyethylene (HDPE)
 Surface: Anti-Slip
 Dimensions: 50 x 50 x 40 cm (Length / Width / Height)
 Weight: 6.8 kg
 Capacity: 92 kg per cube or 368 kg per m²

| | | | |
|-------------------|-------------------------|--------------------|---------------------|
| Grey 003622S16 | Light Blue 003625S16 | Beige 003628S16 | Orange 003750S16 |
|-------------------|-------------------------|--------------------|---------------------|

*Any colour per customers wishes

Cube H27



Material / Composition: High-density Polyethylene (HDPE)
 Surface: Anti-Slip
 Dimensions: 50 x 50 x 27 cm (Length / Width / Height)
 Weight: 5.5 kg
 Capacity: 62 kg per cube or 248 kg per m²

| | | | |
|-------------------|-------------------------|--------------------|---------------------|
| Grey 003729S16 | Light Blue 003730S16 | Beige 003731S16 | Orange 003778S16 |
|-------------------|-------------------------|--------------------|---------------------|

*Any colour per customers wishes

V-Cube H40



Material / Composition: High-density Polyethylene (HDPE)
 Surface: Anti-Slip
 Dimensions: 50 x 50 x 40 cm (Length / Width / Height)
 Weight: 8.0 kg
 Capacity: 80 kg per cube or 320 kg per m²

| |
|-------------------|
| Grey 003743S16 |
|-------------------|

V-Cube H27 Flat



Material / Composition: High-density Polyethylene (HDPE)
Surface: Anti-Slip
Dimensions: 50 x 50 x 27 cm (Length / Width / Height)
Weight: 7.5 kg
Capacity: 50 kg per cube or 200 kg per m²

Grey

003737S16

V-Cube H40 – Roller



Material / Composition: High-density Polyethylene (HDPE)
Surface: Anti-Slip
Dimensions: 50 x 50 x 40 cm (Length / Width / Height)
Weight: 8.5 kg
Capacity: 80 kg per cube or 320 kg per m²

Grey

003740S16

V-Cube H27 – Roller



Material / Composition: High-density Polyethylene (HDPE)
Surface: Anti-Slip
Dimensions: 50 x 50 x 27 cm (Length / Width / Height)
Weight: 8.0 kg
Capacity: 50 kg per cube or 200 kg per m²

Grey

003734S16

V-Cube H25 – Roller



Material / Composition: High-density Polyethylene (HDPE)
Surface: Anti-Slip
Dimensions: 50 x 50 x 25 cm (Length / Width / Height)
Weight: 8.0 kg
Capacity: 50 kg per cube or 200 kg per m²

Grey

003952S16

V-Cube H35 – Roller



Material / Composition: High-density Polyethylene (HDPE)
Surface: Anti-Slip
Dimensions: 50 x 50 x 35 cm (Length / Width / Height)
Weight: 8.0 kg
Capacity: 50 kg per cube or 200 kg per m²

Grey

003989S16

U-Slide H40 – Roller

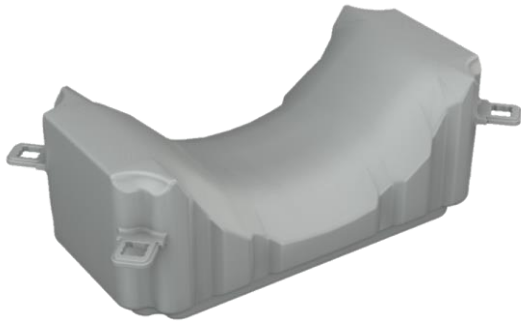


Material / Composition: High-density Polyethylene (HDPE)
Surface: Anti-Slip
Dimensions: 100 x 50 x 40 cm (Length / Width / Height)
Weight: 12.0 kg
Capacity: 150 kg per U-slide or 300 kg per m²

Grey

2021BG001

U-Slide H40



Material / Composition: High-density Polyethylene (HDPE)
 Surface: Anti-Slip
 Dimensions: 100 x 50 x 40 cm (Length / Width / Height)
 Weight: 10.5 kg
 Capacity: 150 kg per U-slide or 300 kg per m²

Grey
 2021BG002

U-Slide H30 - Roller



Material / Composition: High-density Polyethylene (HDPE)
 Surface: Anti-Slip
 Dimensions: 100 x 50 x 30 cm (Length / Width / Height)
 Weight: 12.0 kg
 Capacity: 100 kg per U-slide or 200 kg per m²

Grey
 2021BG003

Connecting Pin TFP



Material / Composition: High-density Polyethylene (HDPE)
 Surface: Anti-Slip
 Dimensions: 25.5 x 18.0 cm (Height / Ø)
 Weight: 0.480 kg

| | | | |
|-------------------|-------------------------|--------------------|---------------------|
| Grey 003850S16 | Light Blue 003961S16 | Beige 003962S16 | Orange 003963S16 |
|-------------------|-------------------------|--------------------|---------------------|

***Connecting Pin Standard**

*Any colour per customers wishes



Grey
 003623S16

Half Pin



Material / Composition: High-density Polyethylene (HDPE)
Surface: Anti-Slip
Dimensions: 27.5 x 8 cm (Height / Ø)
Weight: 0.330 kg

Grey

003624S16

Light Blue

003627S16

Beige

003630S16

Orange

003783S16

*Any colour per customers wishes

Sliding Nut



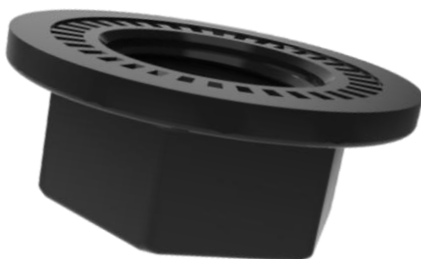
Material / Composition: High-density Polyethylene (HDPE)
Dimensions: 5 x 9.5 cm (Length / Ø)
Weight: 0.069 kg

Black

003728T16



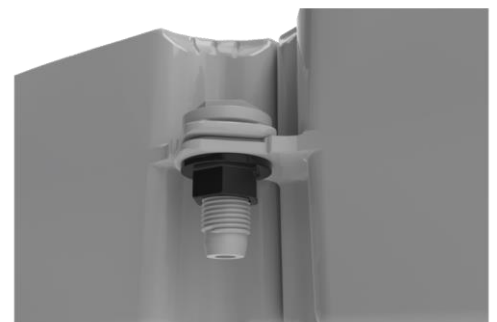
Nut



Material / Composition: High-density Polyethylene (HDPE)
Dimensions: 3.5 x 8.5 cm (Length / Ø)
Weight: 0.060 kg

Black

003650T16



Spacer



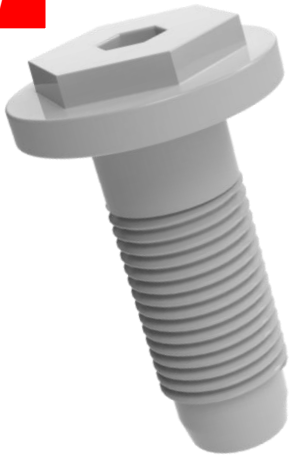
Material / Composition: High-density Polyethylene (HDPE)
Dimensions: 1.5 x 9 cm (Length / Ø)
Weight: 0.038 kg

Black

003732T16

Lug Connector BG

NEW



Material / Composition: High-density Polyethylene (HDPE)
Dimensions: 13.5 x 9 cm (Height / Ø)
Weight: 0.225 kg

Grey

2023BG005



Lug Connector with Ribs



Material / Composition: High-density Polyethylene (HDPE)
Dimensions: 13.5 x 9 cm (Height / Ø)
Weight: 0.225 kg

Black

003752T16

Connecting Pin with Top Up Ring



Material / Composition: High-density Polyethylene (HDPE) & INOX Steel

Surface: Anti-Slip

Dimensions: 30 x 18 cm (Height / Ø)

Weight: 2.500 kg

Black

2019BG002

Connecting Pin with Stud



Material / Composition: High-density Polyethylene (HDPE) & INOX Steel

Surface: Anti-Slip

Dimensions: 34 x 18 cm (Height / Ø)

Weight: 2.00 kg

Grey

2020BG014

Cleat



Material / Composition: INOX Steel / Hot Galvanized Steel

Dimensions: 20 x 37.5 cm (Width / Height)

Weight: 2.00 kg

Silver

2020BG001

Connecting Pin With Inox Cleat – Strong



Material / Composition: High-density Polyethylene (HDPE) & INOX Steel

Surface: Anti-Slip

Dimensions: 30 x 18 cm (Height / Ø)

Weight: 3.00 kg

Black

2018BG006

Inox Cleat PE 2.5 T



Material / Composition: High-density Polyethylene (HDPE) & INOX Steel

Dimensions: 44 cm x 23 cm x 18 cm (Length/ width/ Ø)

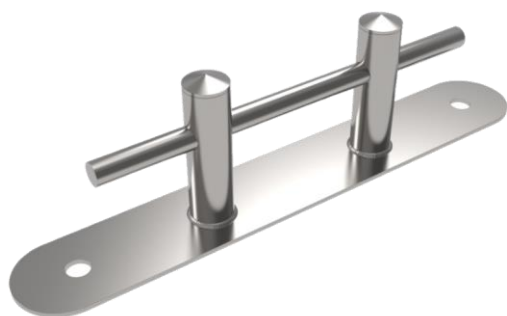
Weight: 2.5 kg

Grey

2024BG001



Inox Cleat PE 5.0 T



Material / Composition: High-density Polyethylene (HDPE) & INOX Steel

Dimensions: 60 cm x 10 cm x 17 cm (Length/ Width/ /Height)

Weight: 6.9 kg

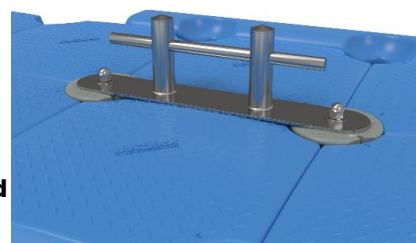
***The Price includes 2 x Connecting Pin with Stud for the installation.**

Silver

2024BG002



2 x Connecting Pin with Stud



HDPE Cleat



Material / Composition: High-density Polyethylene (HDPE)
 Dimensions: 25 x 13 cm (Width / Height)
 Weight: 0.380 kg

Grey
 2023BG008



Connecting Pin with Solar Navigation Light



Material / Composition: High-density Polyethylene (HDPE)
 Dimensions: 38.5 x 18 cm (Height / Ø)
 Weight: 0.715 kg

| | | | |
|-------------------|-------------------------|--------------------|---------------------|
| Grey 2021BG019 | Light Blue 2021BG020 | Beige 2021BG021 | Orange 2021BG022 |
|-------------------|-------------------------|--------------------|---------------------|

*Changing LED Illumination colour: White, Green, Blue, Orange, Yellow, Red



Connecting Pin with Solar Deck Light



Material / Composition: High-density Polyethylene (HDPE)
 Dimensions: 28 x 18 cm (Height / Ø)
 Weight: 0.700 kg

| | | | |
|-------------------|-------------------------|--------------------|---------------------|
| Grey 2022BG001 | Light Blue 2022BG002 | Beige 2022BG003 | Orange 2022BG004 |
|-------------------|-------------------------|--------------------|---------------------|

*LED Illumination colour: White



Connecting Pin with Solar Deck Light – Blue



Material / Composition: High-density Polyethylene (HDPE)
 Dimensions: 28 x 18 cm (Height / Ø)
 Weight: 0.700 kg

| | | | |
|-------------------|-------------------------|--------------------|---------------------|
| Grey 2022BG013 | Light Blue 2022BG014 | Beige 2022BG015 | Orange 2022BG016 |
|-------------------|-------------------------|--------------------|---------------------|

*LED Illumination colour: Blue



Single Fender



Material / Composition: High-density Polyethylene (HDPE)
 Surface: Anti-Slip
 Dimensions: 50 x 25 x 35 cm (Length / Width / Height)
 Weight: 3.500 kg

Grey
2020BG003



Double Fender



Material / Composition: High-density Polyethylene (HDPE)
 Surface: Anti-Slip
 Dimensions: 100 x 20 x 27 cm (Length / Width / Height)
 Weight: 4.600 kg

Grey
2020BG004

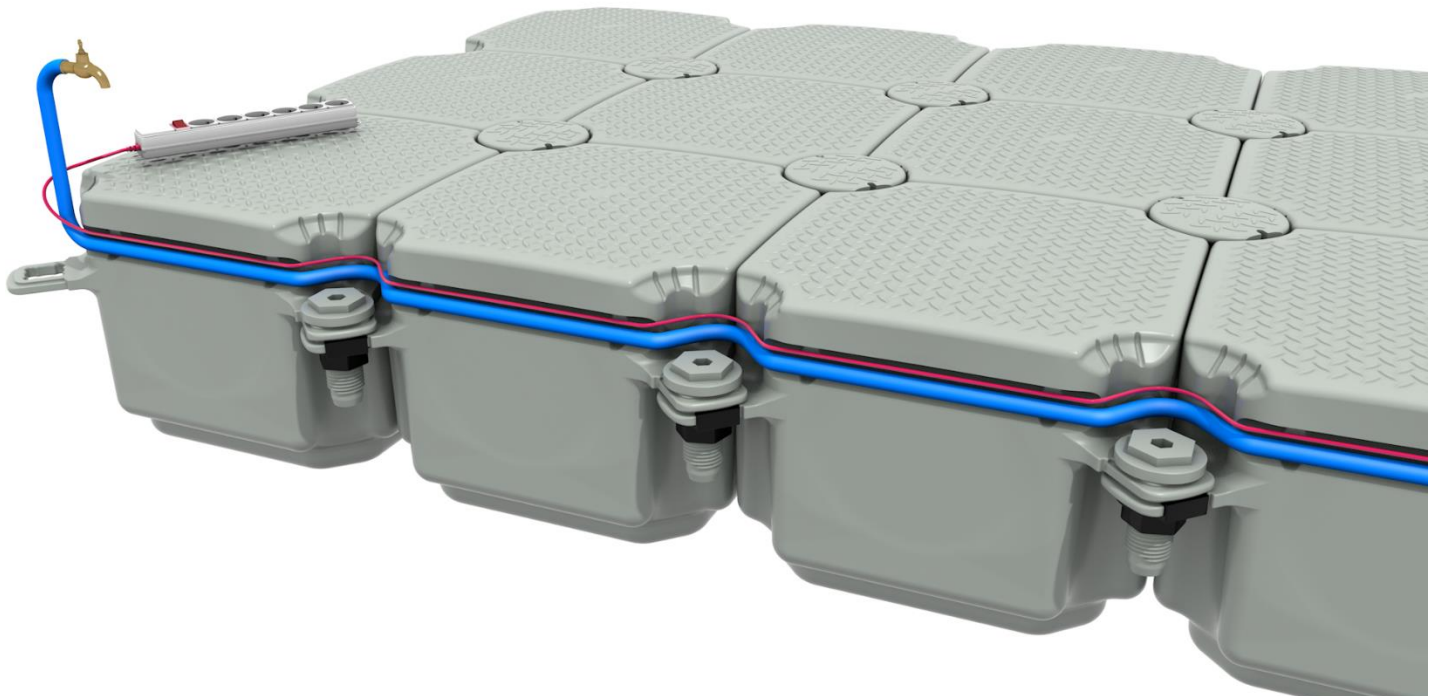
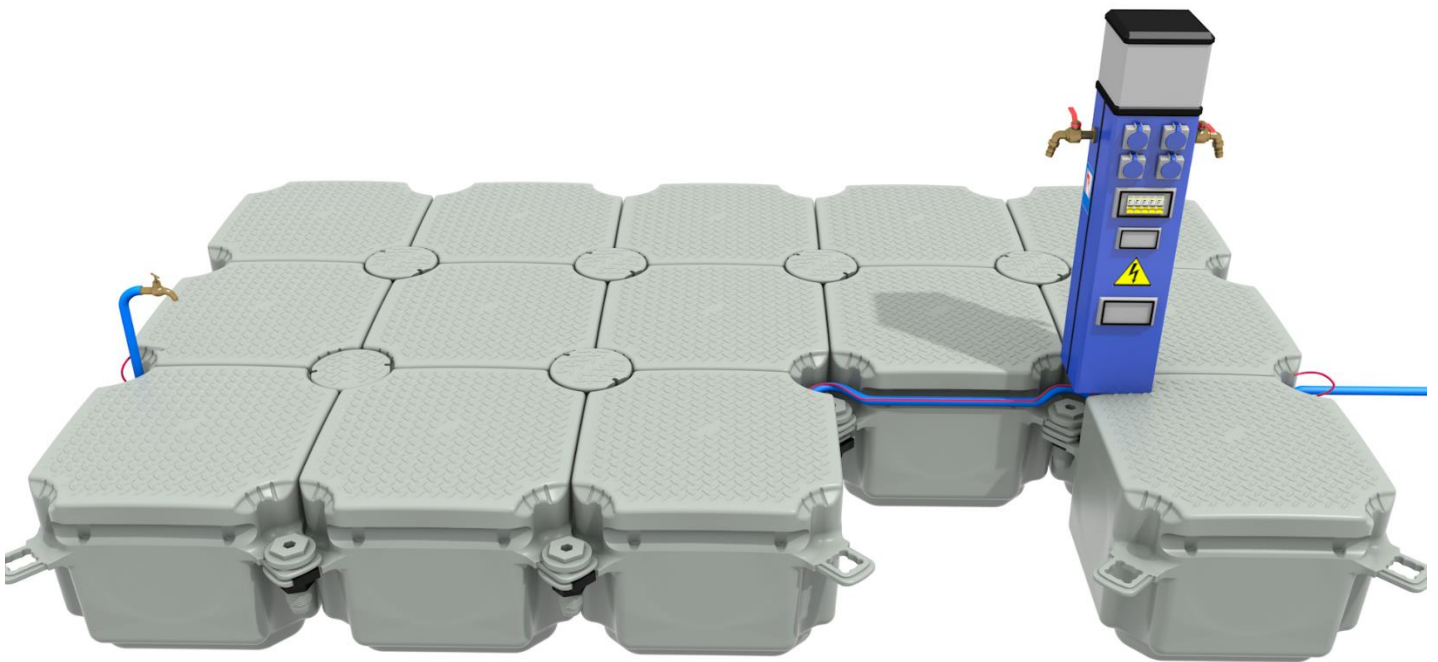


E-Cube H40



Material / Composition: High-density Polyethylene (HDPE)
Surface: Anti-Slip
Dimensions: 50 x 50 x 40 cm (Length / Width / Height)
Weight: 6.8 kg
Capacity: 92 kg per cube or 368 kg per m²

| | | | |
|-------------------|---------------------|----------------|-----------------|
| Grey 004365S16 | Light Blue ----- | Beige ----- | Orange ----- |
|-------------------|---------------------|----------------|-----------------|



INOX Ladder



Material / Composition: INOX Steel
Dimensions: 83 x 183 cm (Width / Height)
Weight: 18.00 kg

***The Price includes 4 x Connecting Pin with Stud for the Ladder installation.**

Silver

2018BG011



4 x Connecting Pin with Stud

INOX Ladder Flat Steps



Material / Composition: INOX Steel
Dimensions: 83 x 183 cm (Width / Height)
Weight: 18.00 kg

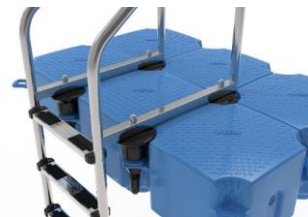
***The Price includes 4 x Connecting Pin with Stud for the Ladder installation.**

Silver

2023BG006



4 x Connecting Pin with Stud



Hot Dip Galvanized Ladder (5 Steps, Foldable)



Material / Composition: Hot-Dipped Galvanized Steel
Dimensions: 60 x 210 cm (Width / Height)
Weight: 34.00 kg

***The Price includes 4 x Connecting Pin with Stud for the Ladder installation.**

Silver

2024BG003



4 x Connecting Pin with Stud



Single Handrail Bar



Material / Composition: Galvanized Steel / INOX Steel
Dimensions: 4,5 x 110 cm (Width / Height)
Weight: 3.500 kg

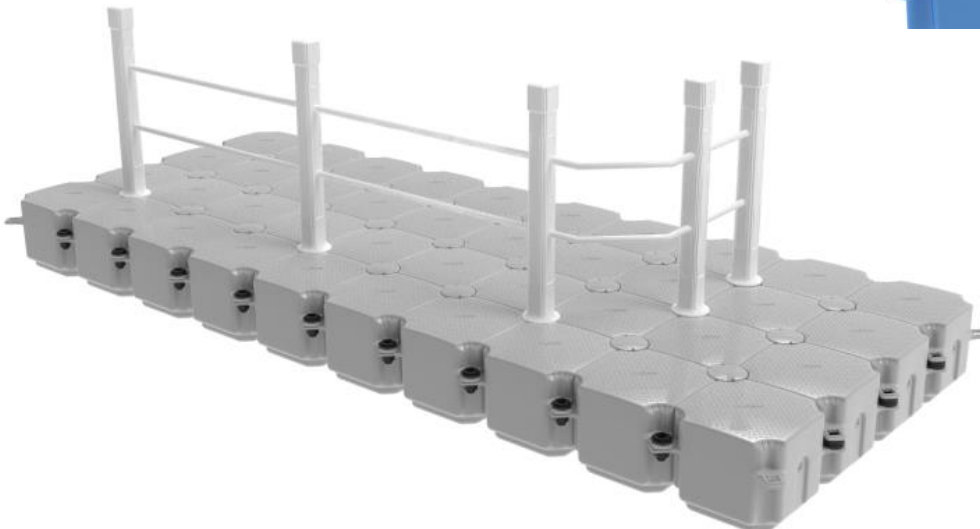
| | |
|--------------|-------------|
| Silver/Black | Silver |
| 2018BG012 | 2018BG012.1 |

Middle HDPE Handrail Bar

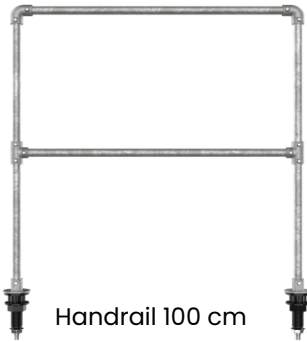


Material / Composition: High-density Polyethylene (HDPE)
Dimensions: 11 x 11 x 110 cm (Length / Height)
Weight:

White
2022BG017



Handrail



Handrail 100 cm

Material / Composition: Galvanized Steel
 Dimensions: 100/150/200 x 110 cm (Length / Height)
 Weight: ... kg



Handrail 150 cm



Handrail 100 cm

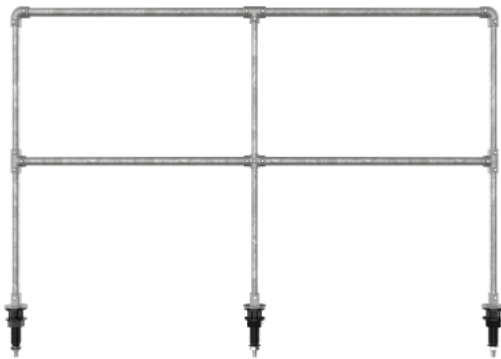
Silver
 2023BG001, 100 cm
 2023BG002, 150 cm
 2023BG003, 200 cm



Handrail 150 cm



Handrail 200 cm



Handrail 200 cm

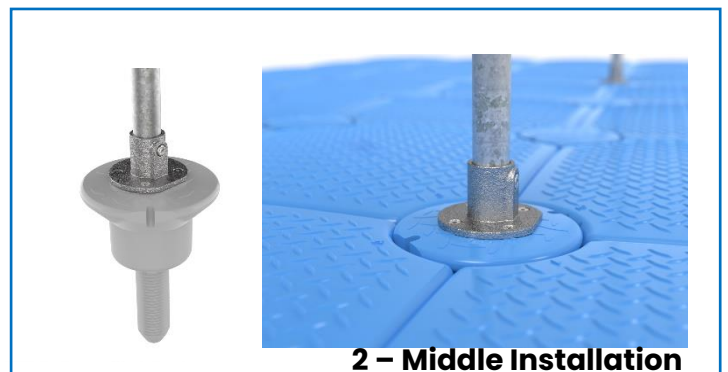
Installation Options

Available options for the installation of the Handrail 100 cm, 150 cm, upon project requirements – middle or external installation options.

⚠ Please, indicate in your quote inquiry the desired installation option for the Handrail 100,150 or 200 cm.



1 - External Installation



2 - Middle Installation

Connecting Pin with Umbrella Holder



Material / Composition: High-density Polyethylene (HDPE) & INOX Steel
Surface: Anti-Slip
Dimensions: 59 x 18 cm (Height / Ø)
Weight: 2.800 kg

Grey

2020BG015

Fishing Rod Holder



Material / Composition: High-density Polyethylene (HDPE)
Surface: Anti-Slip
Dimensions: 28 x 18 cm (Height / Ø)
Weight: 0.700 kg

Grey

2022BG018

Double Layer Connector HD



Material / Composition: High-density Polyethylene (HDPE)
Dimensions: 57 x 5 cm (Height / Ø)
Weight: 1.300 kg

White

2019BG006

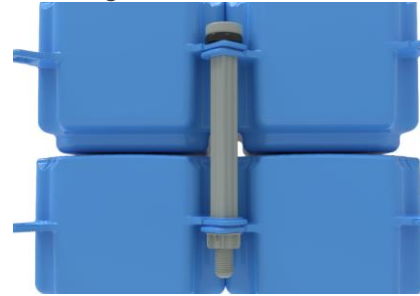
Double Layer Connector



Material / Composition: High-density Polyethylene (HDPE)
 Dimensions: 57 x 5 cm (Height / Ø)
 Weight: 1.300 kg

Grey

2023BG007



Storage Cube



Material / Composition: High-density Polyethylene (HDPE)
 Surface: Anti-Slip
 Dimensions: 50 x 50 x 40 cm (Length / Width / Height)
 Weight: 7.5 kg
 Capacity: 92 kg per cube or 368 kg per m²
 Hatch Dimensions: 37.5 x 37.5 cm (Length / Width)

Grey

2021BG015

Light Blue

2021BG016

Beige

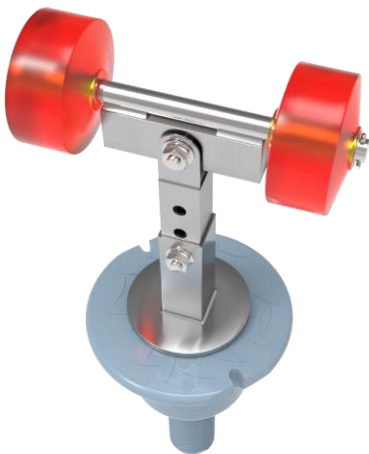
2021BG017

Orange

2021BG018

*Any colour per customers wishes

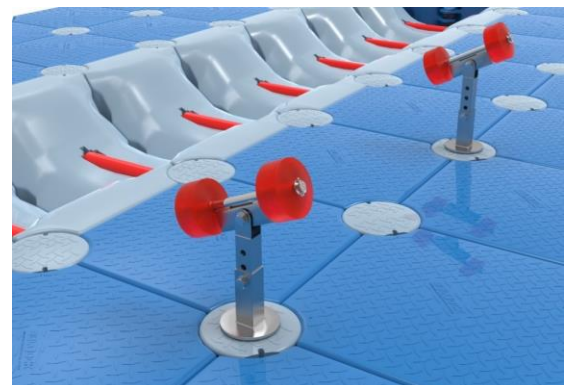
Side Roller Set – 1 piece



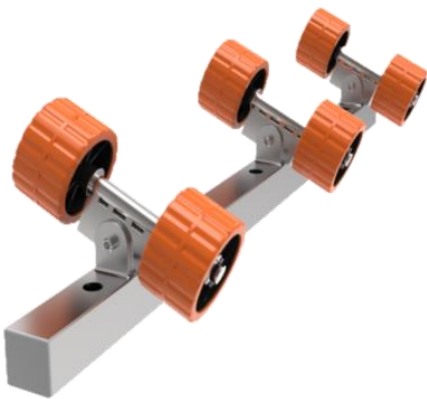
Material / Composition: INOX Steel / Polyurethane
 Dimensions: 44/55 x 18 cm (Height / Ø)
 Weight: 4.150 kg

Red

2021BG004



Heavy Duty Side Roller Set



Material / Composition:

INOX Steel / Polyurethane

Dimensions:

***Designed for heavy boats**
130.5 cm x 27.5 cm x 19.0 cm
(Length / Width/ Height)

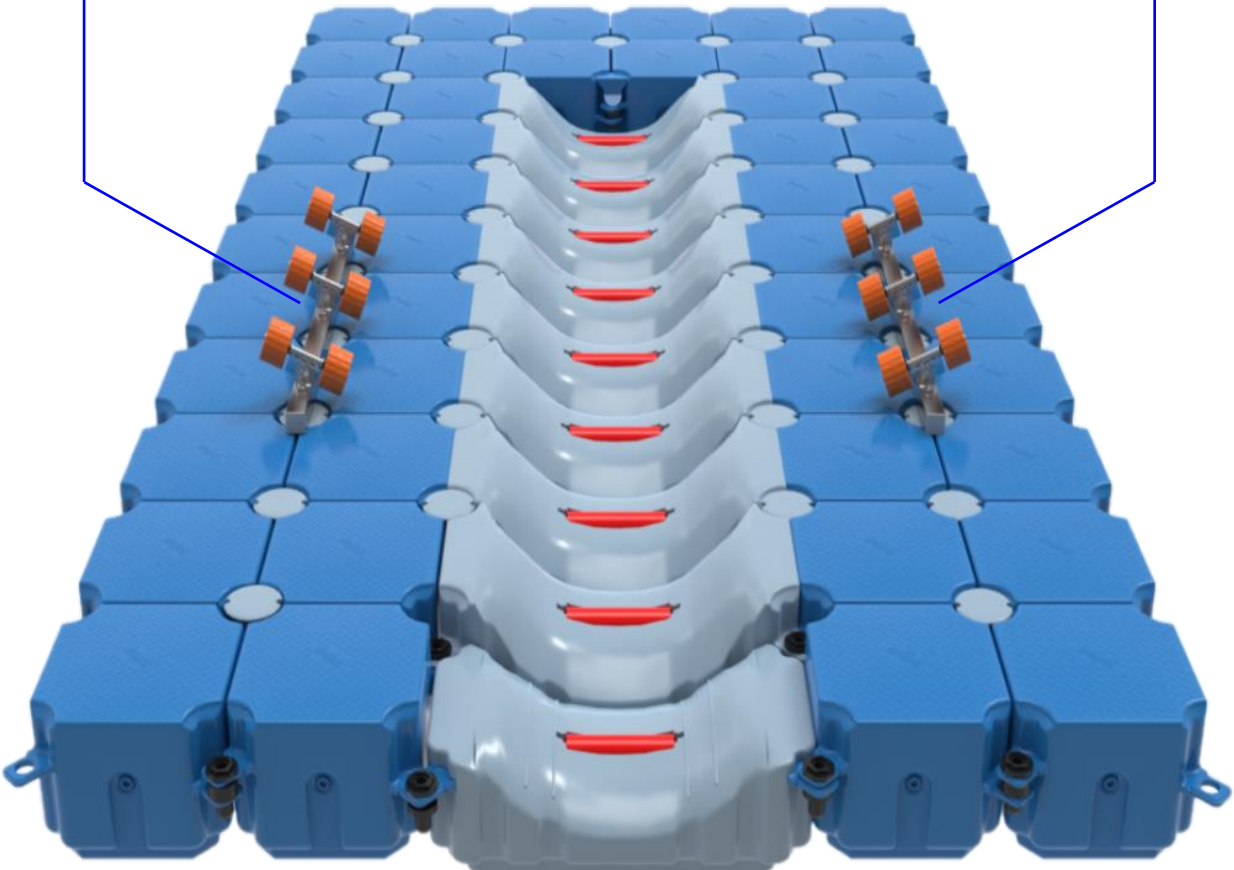
Weight:

10.00 kg

Red
2023BG012



The Price includes 3 x Connecting Pin with



Keel Roller RP-5 with Axis



Material / Composition: Polyurethane, Steel AISI 316
 Dimensions: 12 x 7 cm (Length / Ø)
 Weight: 0.590 kg

Red
 2018BG010

***The Price includes 1 x INOX axis for the Keel Roller**



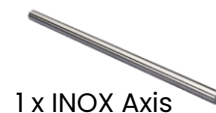
Keel Roller RP-212 with Axis



Material / Composition: Polyurethane, Steel AISI 316
 Dimensions: 29.5 x 6 cm (Length / Ø)
 Weight: 1.420 kg

Red
 2021BG005

***The Price includes 1 x INOX axis for the Keel Roller**



Winch post with Bow Rollers/ no winch



Model Nº:

401.4-6

401.6-8

401.8-1

Material / Composition: INOX Steel
 Dimensions: 680-800 x 102 x 600-800 mm
 (Length / Width/ Height)
 Weight: 15.00 kg

Silver

401.4-6

Silver

401.6-8

Silver

401.8-1

Small Hand Winch with Strap



Model №:

Boats 1500 kgs / 6m

Boats 3000 kgs / 12m

Silver

103231

Silver

1032313

Electric Winch



NINJA



Model №::

401513 | NINJA | Boats up to 2 000 kg

401520 | WARRIOR | Boats up to 3 500 kg

Description:

Winch is equipped with a 70% stronger Amortek winch rope instead of a traditional steel cable.

- Small winch rope assembled specially.
- Stainless steel winch adapter plate for attaching the electric winch to the winch pole.
- Stainless steel Battery box holder for a secure attachment to the trailer chassis
- 80 Amp. – model №: 401513/ 100 Amp. – model №: 401520
- High quality Semi-traction battery for long-term discharge.
- Fully automatic battery charger which, in addition to charging, also keeps the battery in top condition automatically.
- Main switch with red main switch key
- Remote control wired for both models and wired and wireless for **model №: 401520**.

⚡ The specified model is indicative and can be replaced with a similar according to the parameters model, available at the market.

Assembling Tool



Material / Composition: INOX Steel
Dimensions: 55 x 100 cm (Width/ Height)
Weight: 4.150 kg

Silver
2018BG013

Nut Tool



Material / Composition: Aluminium
Dimensions: 36 x 9 cm (Length / Width)
Weight: 0.200 kg

Silver
2019BG013

Hexagon Screw Tool



Material / Composition: INOX Steel
Dimensions: 40 x 65 cm (Width/ Height)
Weight: 2.00 kg

Silver
2020BG017

Hex Bit Socket Set for Lug Connectors



Material / Composition: Chrome, Molybdenum, Alloy, Steel
 Dimensions: Length: 6.5 cm (Width/Height)
 Weight: 0.240 kg

| | |
|--------------------|------------------|
| GREY | RED |
| HPD 30430 GREY (L) | HPD DHR8 RED (S) |



Hand Pile Driver



Material / Composition: Metal/ Iron
 Dimensions: GREY (L):60x34x16 cm (Length/Width/Height)
 RED (S):75x22.5x7.6 cm (Length/Width/Height)
 Weight: GREY (L):15.12 kg; RED(S): 8.52 kg.

| Model: |
|--------------------|
| HPD 30430 GREY (L) |
| HPD DHR8 RED (S) |

BulDock Grease Lubricant



Material / Composition: Food Grade Silicone Grease
 Weight: 0.200 g

White
 2022BG019

Anchoring Ring



Material / Composition: High-density Polyethylene (HDPE) & INOX Steel

Dimensions: 31 x 9 cm (Length / Ø)

Weight: 1.230 kg

Black

2019BG008

Anchoring Pin



Material / Composition: High-density Polyethylene (HDPE) & INOX Steel

Surface: Anti-Slip

Dimensions: 48 x 18 cm (Length / Ø)

Weight: 2.500 kg

Black

2018BG004

Double Anchoring Beam



Material / Composition: Galvanized Steel

Dimensions: 60 x 4 x 12 cm (Length / Width / Height)

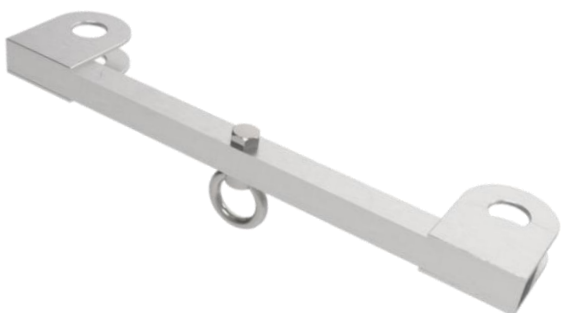
Weight: 2.00 kg

Silver

2022BG005



Side Mooring Set



Material / Composition: Galvanized Steel

Dimensions: 60 x 12 cm (Length / Height)

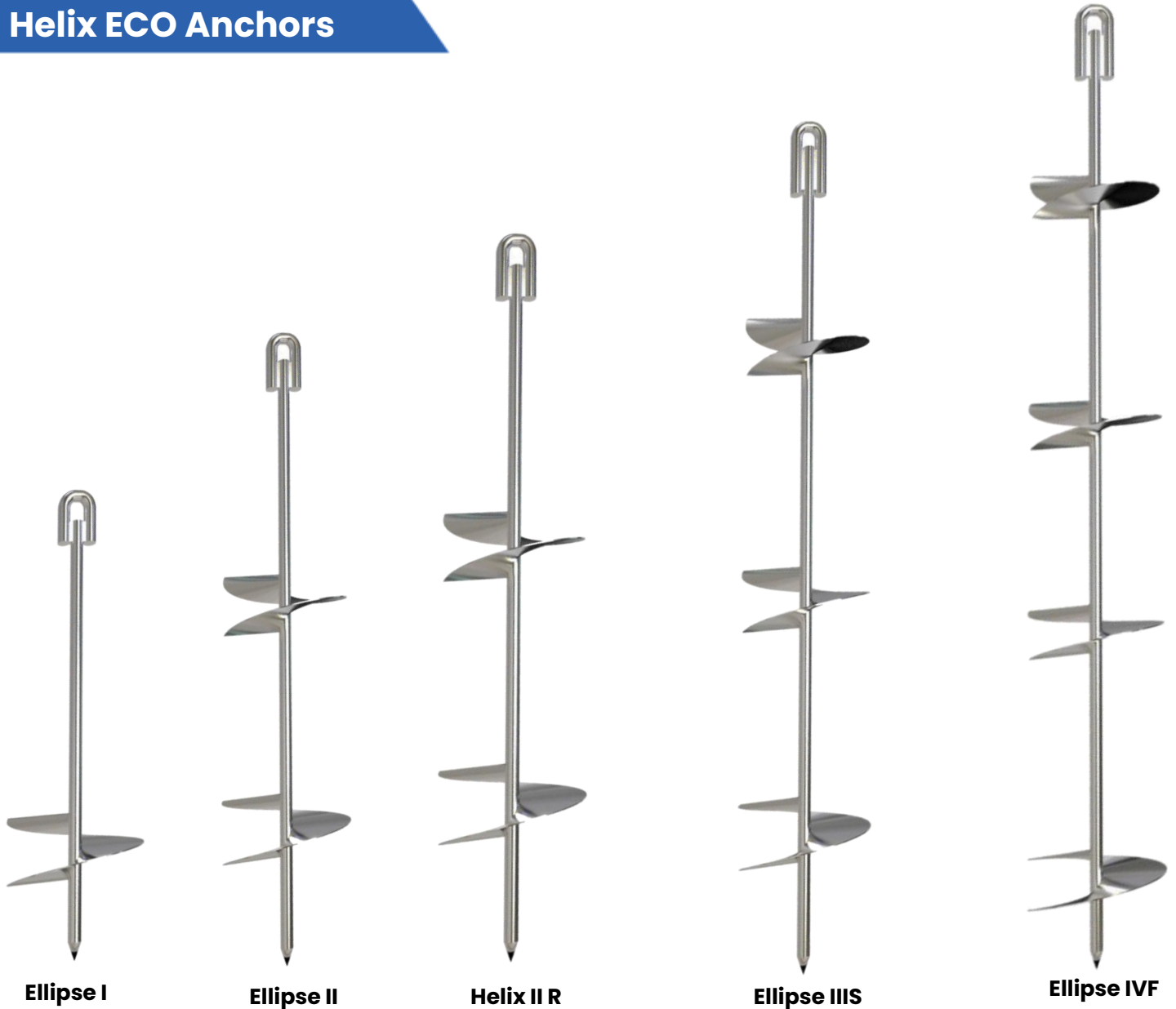
Weight: 4.00 kg

Silver

2022BG006



Helix ECO Anchors



| Model No: | Height / Ø Disk / Ø Rod | Weight: |
|---------------------|----------------------------|----------|
| Ellipse I | 100 cm x 25cm x 2.5 cm | 5.5 kg. |
| Ellipse II | 150 cm x 25 cm x 2.5 cm | 8.5 kg. |
| Helix II R | 200 cm x 30 cm x 2.5 cm | 19.0 kg. |
| Ellipse IIIS | 200 cm x 30 cm x 3.0 cm | 24.0 kg. |
| Ellipse IVF | 300 cm x 30/40 cm x 3.0 cm | 28.0 kg. |

| Tensile Strength Certificate | Ellipse I | Ellipse II | Ellipse IIIS | Ellipse IVF |
|---|-----------|------------|--------------|-------------|
| Minimum holding certified by VERITAS - soft soil | 0.8 t | 1.0 t | 2.3 t | 4.0 t |
| Equivalent concrete block - soft soil | 1.1 t | 1.7 t | 3.3 t | 5.7 t |
| Minimum holding certified by VERITAS - compact soil | 1.3 t | 2.0 t | 4.2 t | 5.3 t |
| Equivalent concrete block - compact soil | 1.8 t | 2.9 t | 6.0 t | 7.7 t |

Hot Dipped Galvanized Chain – DIN 764

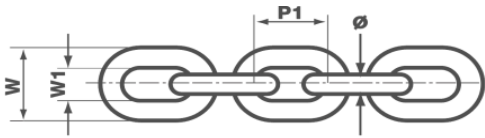


| Product Code: | Model: |
|------------------|--------------------|
| 2022BG027 | HDG Ø 14 mm |
| 2022BG028 | HDG Ø 16 mm |
| 2022BG029 | HDG Ø 20 mm |

Material / Composition: Hot Dipped Galvanized Steel
Standard: DIN 764 / Mooring Chain

| Ø mm | P1 mm | W1 mm | BLL ¹ | Weight kg/m |
|--------------|--------------|--------------|------------------|----------------|
| 14 mm | 49 mm | 20 mm | 98 | 4.10 kg |
| 16 mm | 56 mm | 22 mm | 128 | 5.40 kg |
| 20 mm | 70 mm | 27 mm | 200 | 8.50 kg |

BLL = Breaking Load Limit

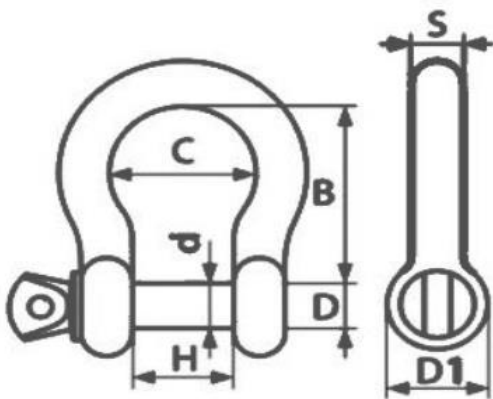


Hot Dipped Galvanized Shackle



| Product Code: | Model: |
|------------------|--------------------|
| 2022BG030 | HDG Ø 16 mm |
| 2022BG031 | HDG Ø 18 mm |
| 2022BG032 | HDG Ø 20 mm |
| 2022BG033 | HDG Ø 22 mm |

Material / Composition: Hot Dipped Galvanized Steel
Standard: Stamped CEE, Diameter, W.L.L. brand
Safety Ratio: 4:1



| Ø mm | B mm | H mm | C mm | kg / unit |
|--------------|--------------|--------------|--------------|----------------|
| 16 mm | 64 mm | 32 mm | 48 mm | 0.47 kg |
| 18 mm | 71 mm | 36 mm | 54 mm | 0.70 kg |
| 20 mm | 80 mm | 38 mm | 60 mm | 0.79 kg |
| 22 mm | 85 mm | 44 mm | 66 mm | 1.33 kg |

Pile Guiding Cube H40



Dimensions Ø

Φ160 mm

Φ250 mm

Φ315 mm

| | |
|-------------------------|---|
| Material / Composition: | High-density Polyethylene (HDPE) |
| Surface: | Anti-Slip |
| Dimensions: | 50 x 50 x 40 cm (Length / Width / Height) |
| Weight: | 8.00 kg |
| Capacity: | 90 kg per cube or 368 kg per m ² |

Grey

2018BG001

Light Blue

2018BG002

Beige

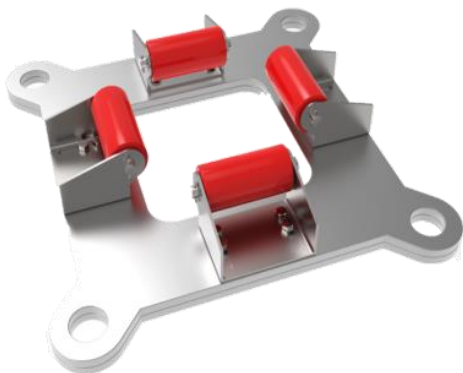
2018BG003

Orange

2018BG004

*Any colour per customers wishes

Adjustable Pile Guide – Aluminum Ø 160 mm –230 mm



Dimensions:

10 mm Single Plate

20 mm Double Plate

| | |
|-------------------------|---------------------------------|
| Material / Composition: | Aluminium |
| Dimensions: | 50.5 x 50.5 cm (Length / Width) |
| Thickness: | 10 mm / 20 mm |
| Weight: | 11.50 kg / 17.00 kg |
| Adjustable Diameter: | Ø 160 mm - Ø 230 mm |

Silver

10 mm 2023BG009
20 mm 2023BG010



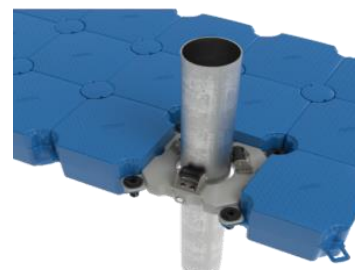
Adjustable Pile Guide – HDPE Ø 200 mm –230 mm



| | |
|-------------------------|----------------------------------|
| Material / Composition: | High-density Polyethylene (HDPE) |
| Dimensions: | 50.5 x 50.5 cm (Length / Width) |
| Thickness: | 80 mm |
| Weight: | 6.80 kg |
| Adjustable Diameter: | Ø 200 mm - Ø 230 mm |

Grey

2023BG011



Pontoon-to-Pontoon Adaptor



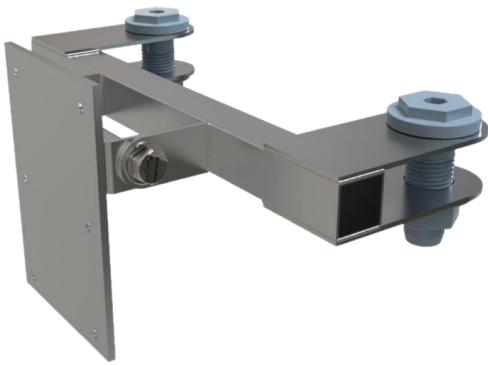
Material / Composition: Hot Dipped Galvanized Steel

Silver

2019BG003



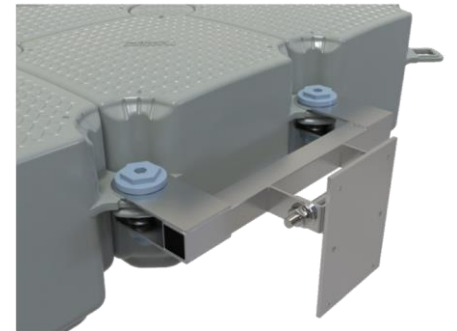
Pontoon-to-Pontoon Adaptor Double



Material / Composition: Hot Dipped Galvanized Steel

Silver

2024BG004



Mooring Arm Bracket



Material / Composition: Hot Dipped Galvanized Steel

Dimensions:

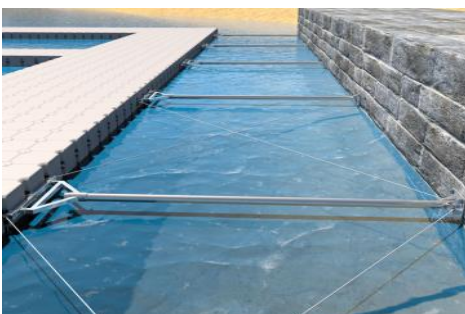
112 x 72 cm (Length / Height)

Weight:

17.500 kg

Silver

2019BG018



Wall Plate



Material / Composition: Hot Dipped Galvanized Steel
Dimensions:
Weight:

Silver

2019BG019

Galvanized Pile Bracket V2



Material / Composition: Galvanized Steel
Dimensions: 60 x 26 cm (Length / Width)
Weight: 3.00 kg

Silver

2021BG006

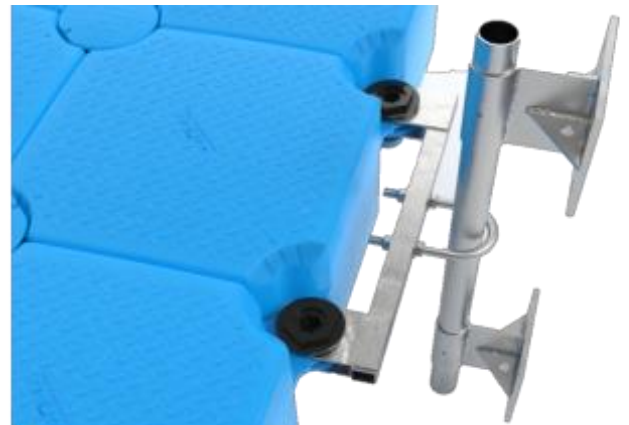
Wall Bracket Adaptor Plate – Galvanized – Model V



Material / Composition: Galvanized Steel
Dimensions: 20 x 20 x 17 cm (Length/Width/ Height)
Weight: 4.4 kg

Silver

2022BG007



Pipe Galvanized Steel Ø 48 mm



Material / Composition: Galvanized Steel
Dimensions: 100 x 0.32 cm (Length / Width)
Pipe Diameter: 48 mm

Silver

2022BG008



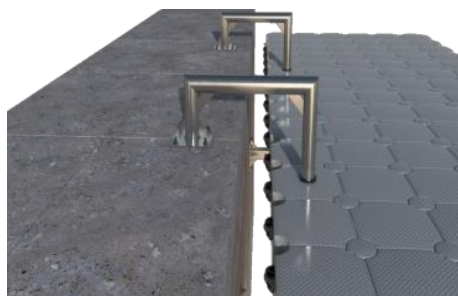
Wall Bracket Adaptor Set Adjustable



Material / Composition: Galvanized Steel
Dimensions: ⚡ On Request
Pipe Diameter: 100 mm

Silver

2019BG024



T - Beam



Length:

T-Beam **250 cm**

T-Beam **300 cm**

T-Beam **350 cm**

T-Beam **400 cm**

Material / Composition: Galvanized Steel

Silver 250 cm

Silver 300 cm

Silver 350 cm

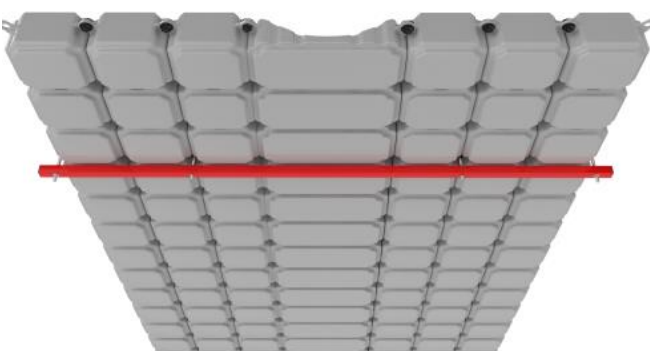
Silver 400 cm

2022BG009

2022BG010

2022BG011

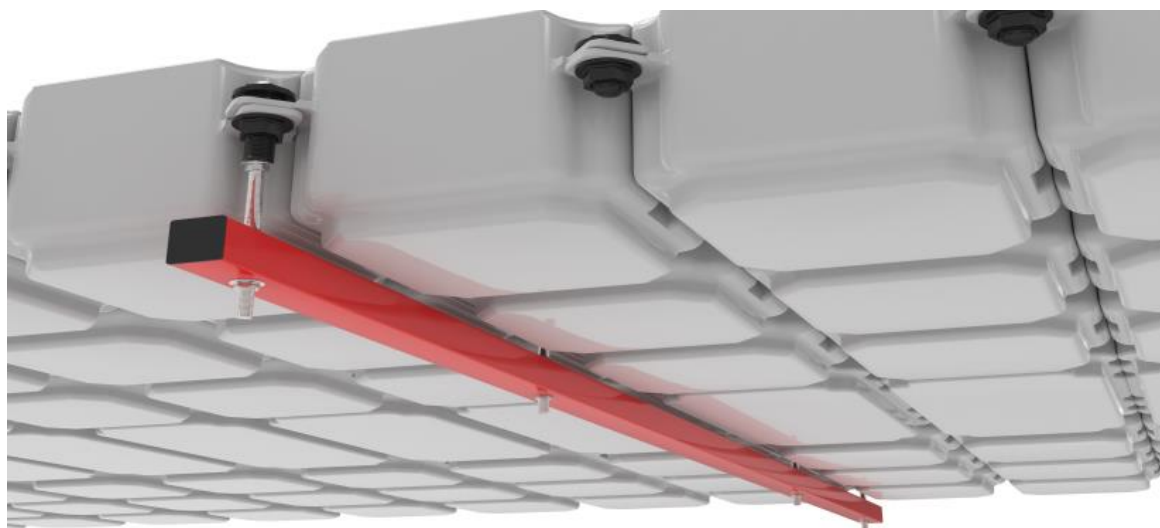
2022BG012



Specially designed for oversized and heavy boats more than 1000 kg. BulDock advise is customers to include one T-Beam in appropriate dimensions to the Boat Slider system to achieve bigger buoyancy and stability.

For heavier boats, need to install two T-Beams to the Boat Slider.

⚠ For maximum efficiency of the T-Beam, we recommend the installation of the T-Beam through Anchoring Pins.



Aluminum Gangway with Handrails

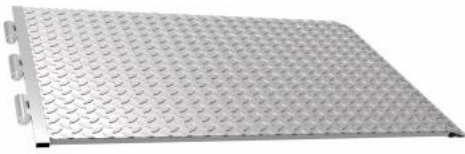


Material / Composition: Aluminium
 Dimensions: 100 cm x 300 cm (Width/Length)

 **Various dimensions are available upon request.**

Silver
 2022BG020

Pontoon Transition Plate



| Dimensions Ø |
|---------------|
| 100 cm |
| 150 cm |

Material / Composition: Aluminium
 Dimensions: 100 cm x 100 cm (Width/Length)
 100 cm x 150 cm (Width/Length)

Silver
 2022BG021

Silver
 2022BG022

Plate Connecting Adaptor – Pier to Pontoon



Material / Composition: Aluminium
 Dimensions: 100 x 13 x 10 cm (Length/ Width/Height)
 Weight: 2.600 kg

Silver
 2022BG023

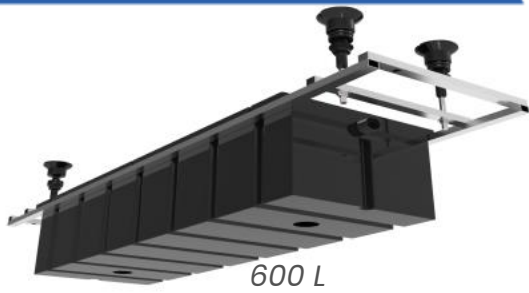
Plate Connecting Adaptor – Pontoon to Shore



Material / Composition: Aluminum
 Dimensions: 110 x 14 x 12 cm (Length/ Width/Height)
 Weight: 7.400 kg

Silver
 2022BG024

Air Lifter Set



Air Lifter Set include:

- Floater **600 L** or **2000 L**
- SUPER SILENT Compressor with electronic engine control
- Hoses, valves, accessories
- Fixing accessories

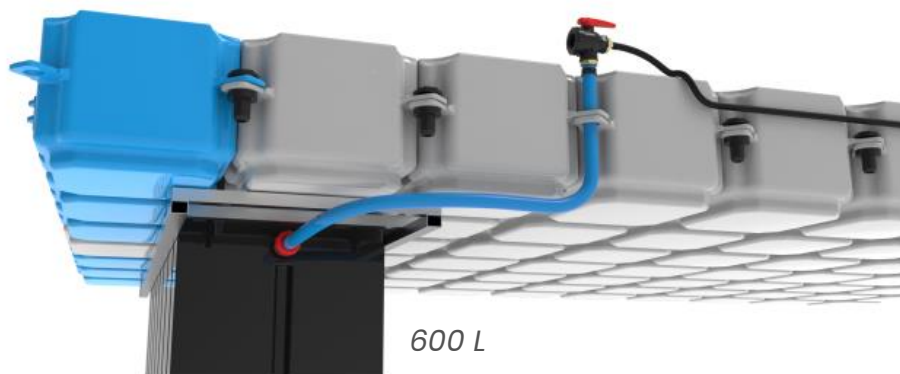
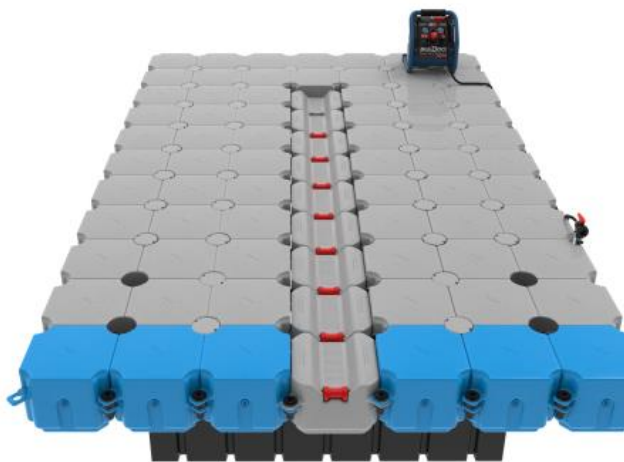
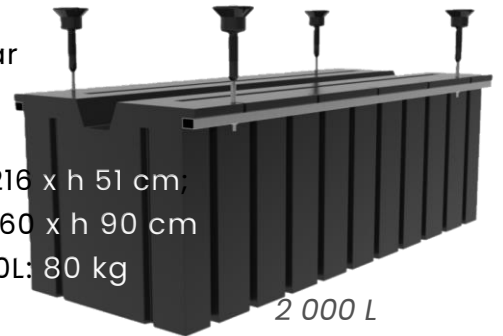
Model:

Air Lifter Set 600

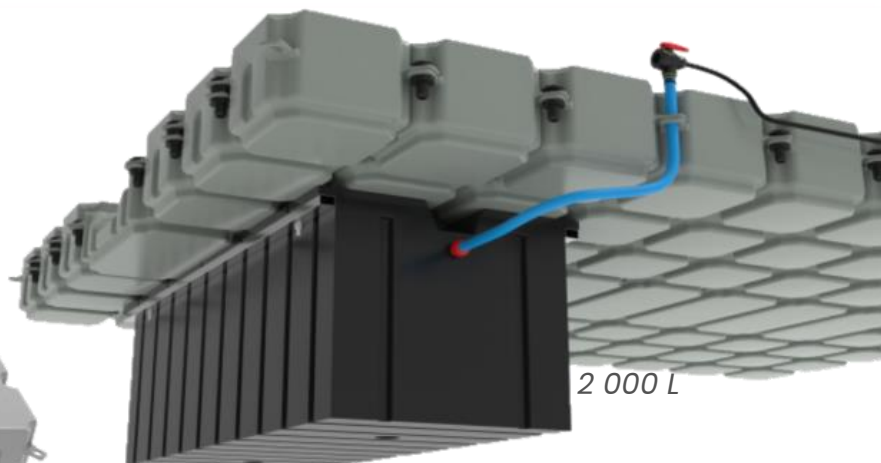
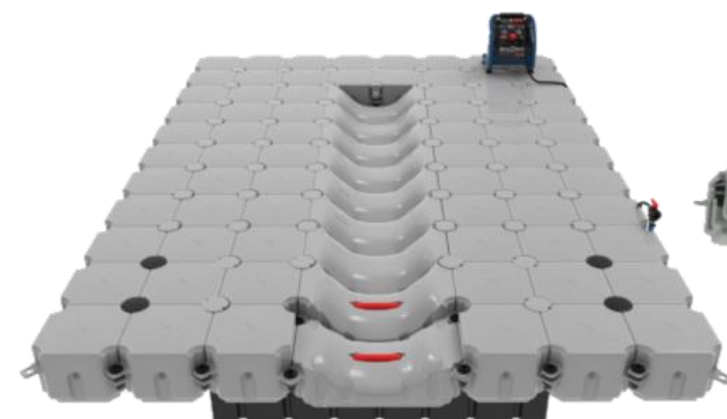
Air Lifter Set 2 000

Air Compressor Specifications:

- Voltage: 230 V, 50 Hz.
🔌 **Please contact us for different voltage requirements.**
- Power: 1100 kW with 2 engines with metal tips, each 550 W.
- Noise Level: 65 dB
- Maximum Pressure: 8 bar
- Flow Rate: 240 l/min.
- Tank Volume: 50 l.
- Dimension **600 L**: 74 x 216 x h 51 cm
- Dimension **2000 L**: 110 x 260 x h 90 cm
- Weight 600L: 40 kg; 2000L: 80 kg



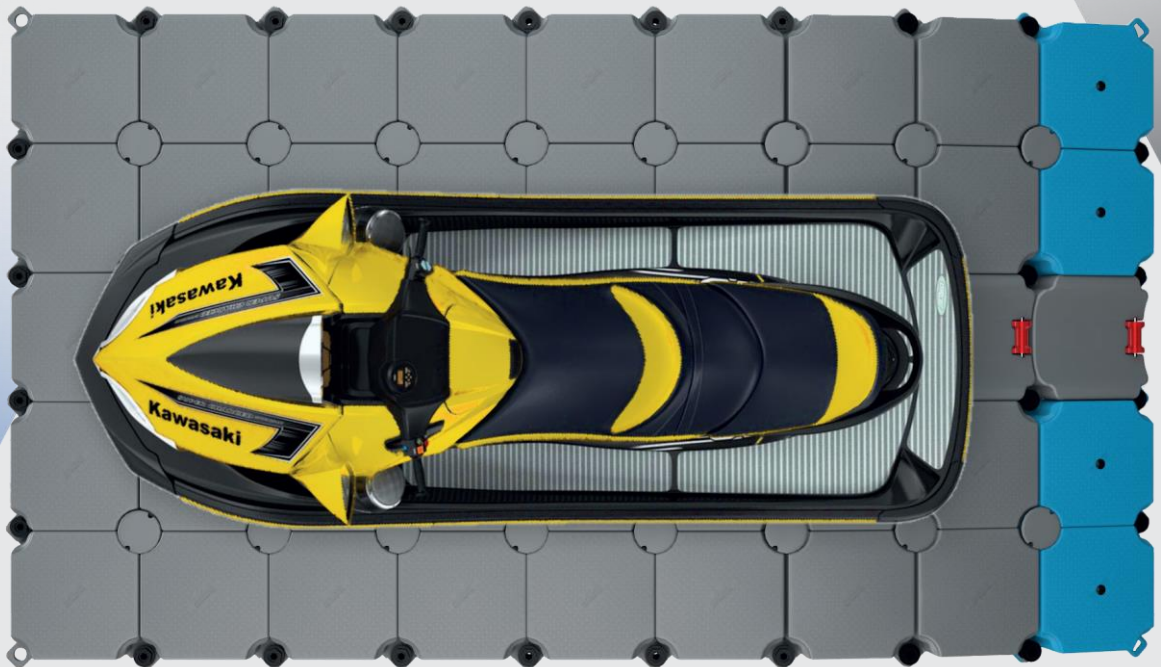
Boat Slider V-Slide Platform Installation



Boat Slider U-Slide Platform Installation

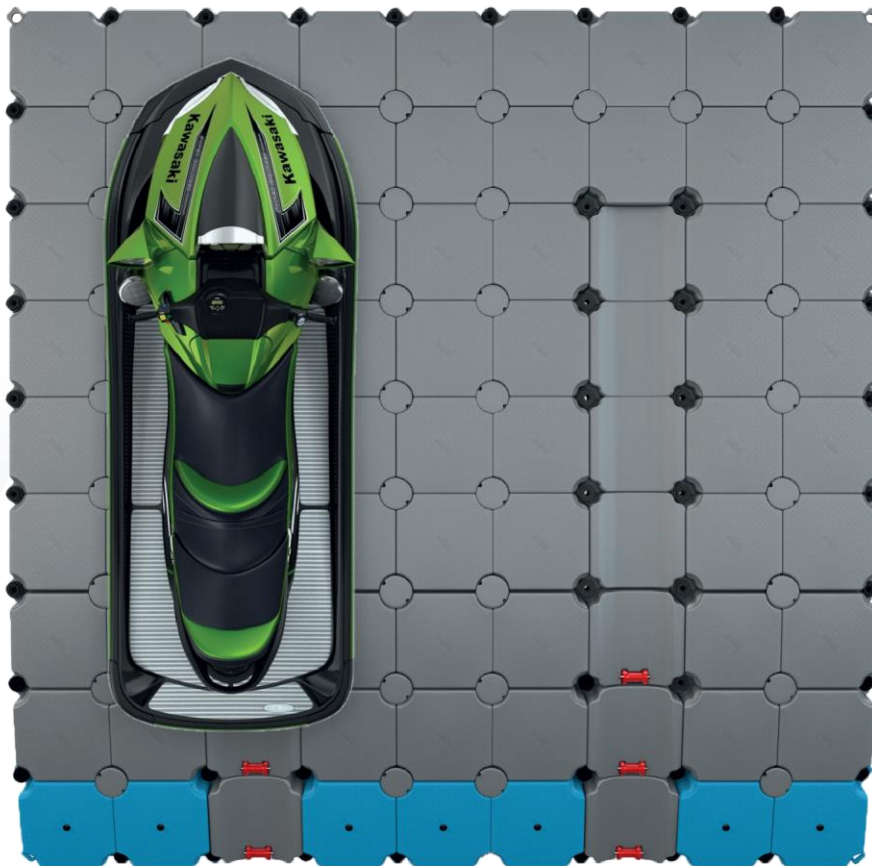
Jet Sliders

The **Jet Slider** is made of efficient new-generation HDPE (high-density polyethylene).



BulDock Jet Slider is a unique dry dock system.

The **Jet Slider** is lightweight, but thanks to its' technology, it is resistant to impact, chemical products, UV rays and severe weather conditions.



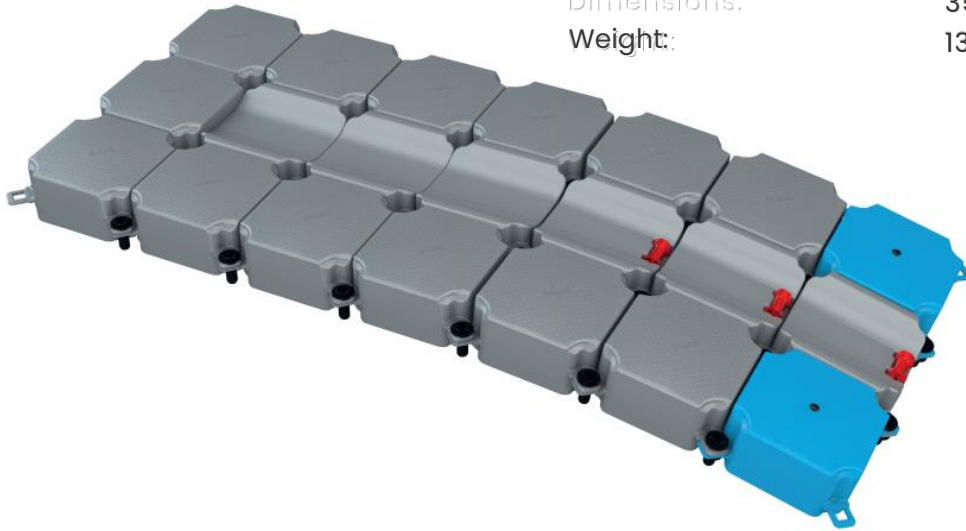
Its' exceptional design prevents any disproportionate strain on the hull by distributing the watercraft's weight evenly.

The **Jet Slider** does not feature any moving parts that might be damaged or would require maintenance.

Jet Sliders

Jet Slider 350

Material // Composition: High-density Polyethylene (HDPE)
Rollers: Polyurethane, Inox Steel
Surface: Anti-Slip
Dimensions: 350 x 150 x 27 cm (Length/Width/Height)
Weight: 135 kg

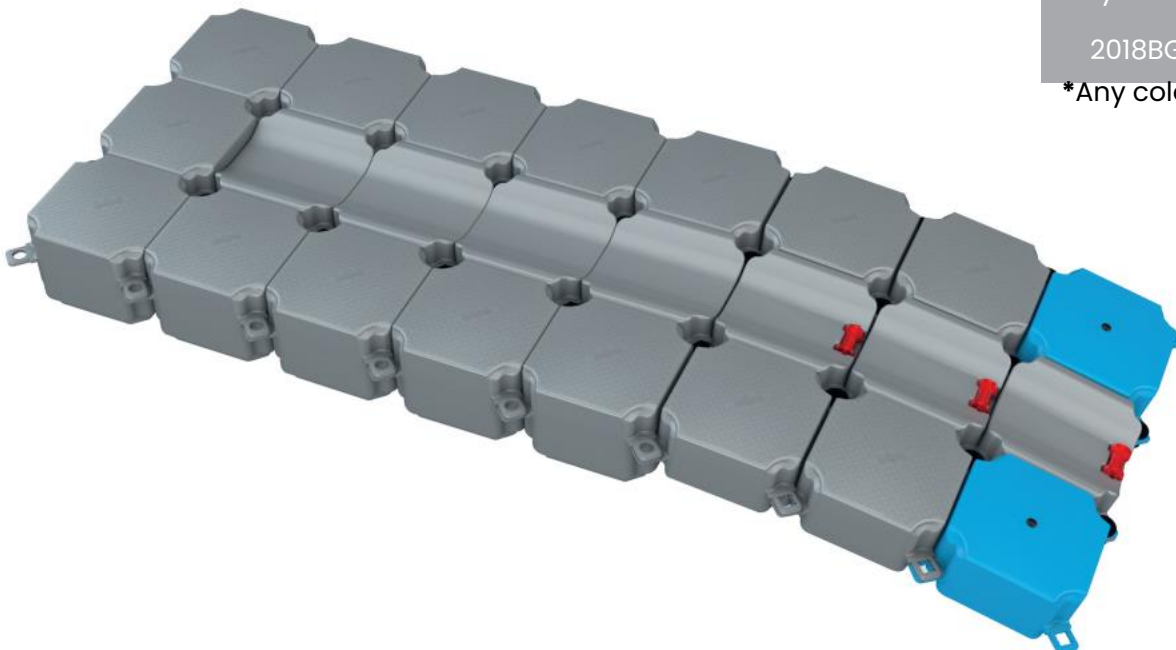


| | |
|-----------|-----------|
| Grey | Beige |
| 2018BG015 | 2018BG016 |

*Any colour per customers wishes

Jet Slider 400 Big Size

Material / Composition: High-density Polyethylene (HDPE)
Rollers: Polyurethane, Inox Steel
Surface: Anti-Slip
Dimensions: 400 x 150 x 40 cm (Length/Width/Height)
Weight: 180 kg



| | |
|-----------|-----------|
| Grey | Beige |
| 2018BG017 | 2018BG018 |

*Any colour per customers wishes

Jet Slider Twin450

Material / Composition: High-density Polyethylene (HDPE)
Rollers: Polyurethane, Inox Steel
Surface: Anti-Slip
Dimensions: 450 x 450 x 40 cm (Length/Width/Height)
Weight: 540 kg

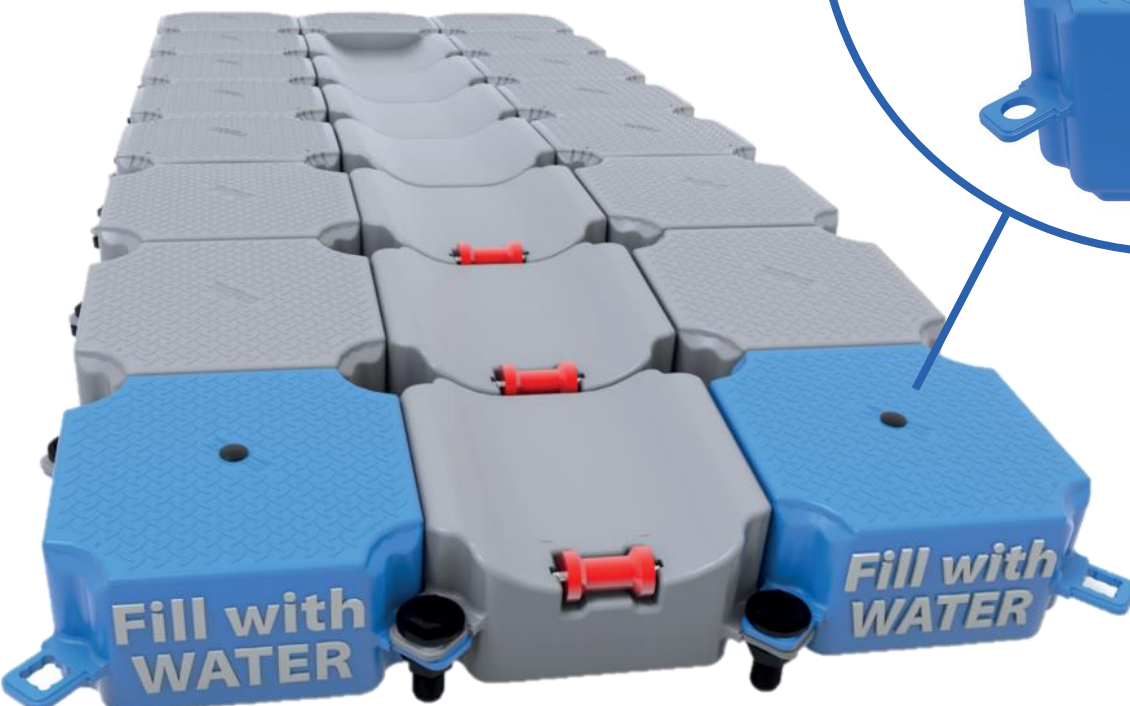
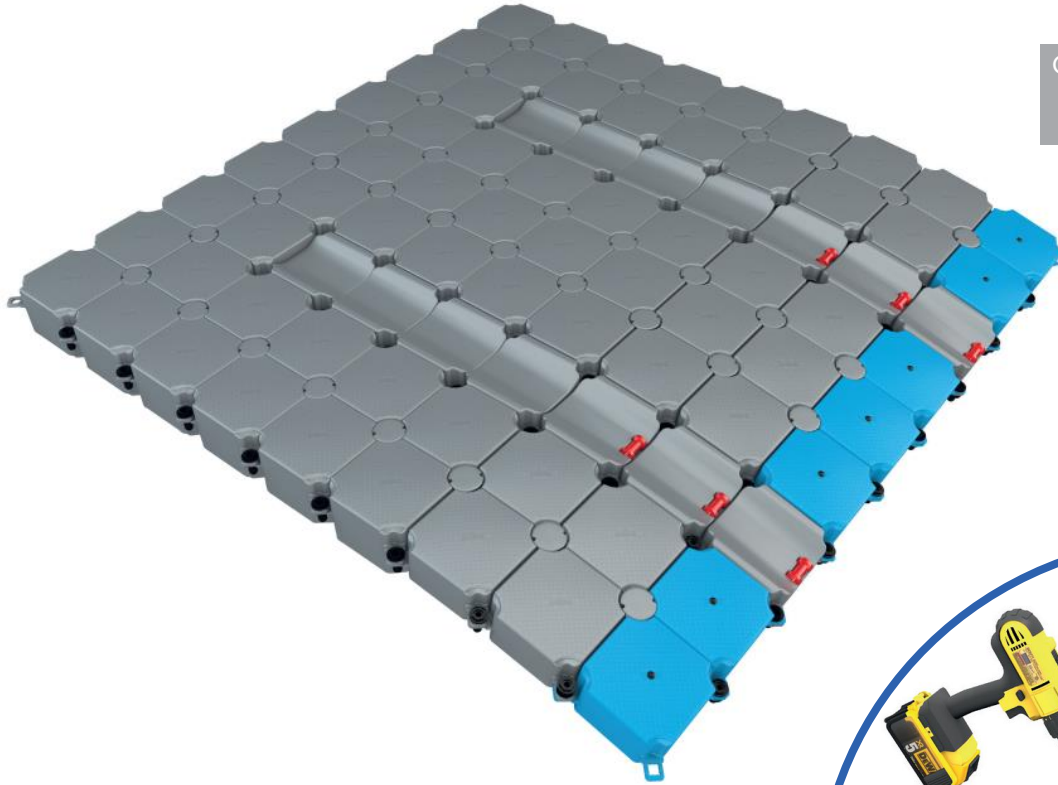
Grey

2018BG019

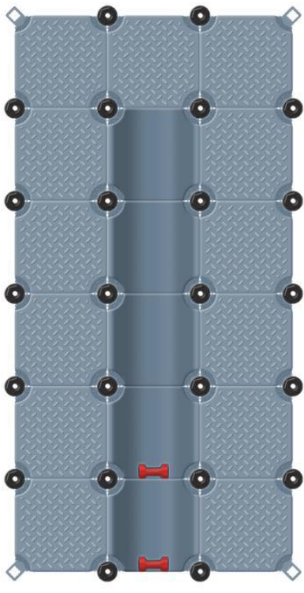
Beige

2018BG020

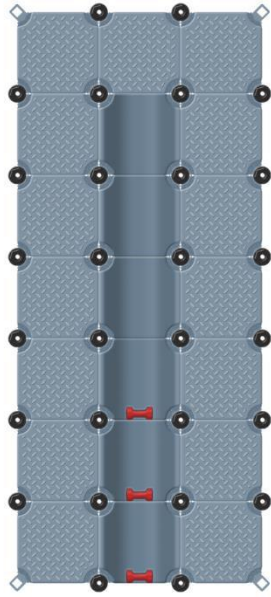
*Any colour per customers wishes



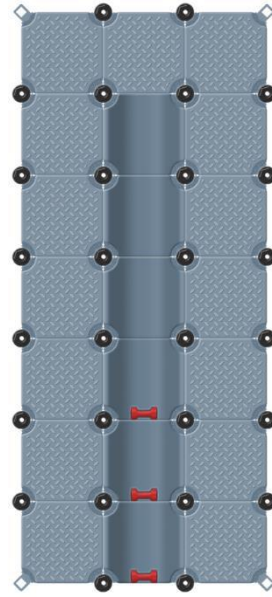
Jet Sliders



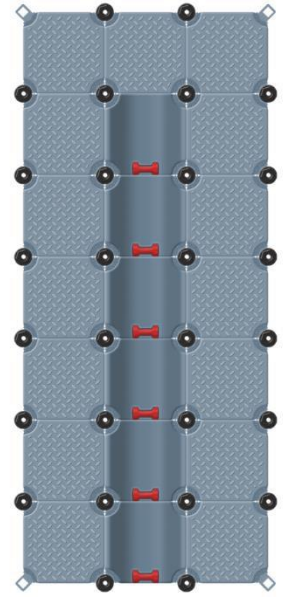
Jet Slider 300 H27



Jet Slider 350 H27

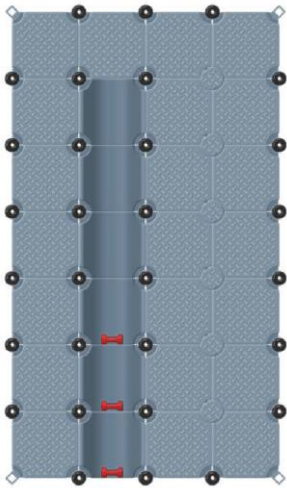


Jet Slider 350 H40

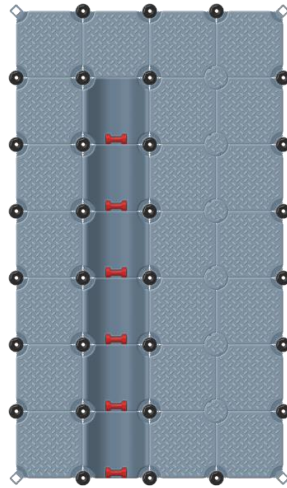


Jet Slider 350 H40 R

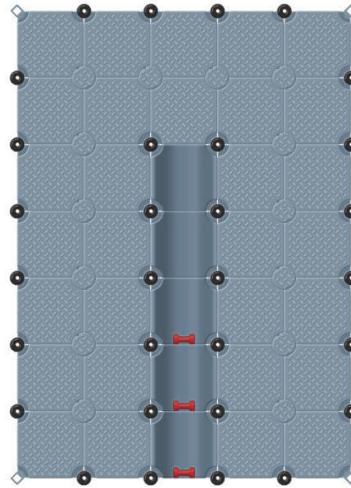
BULDOCK



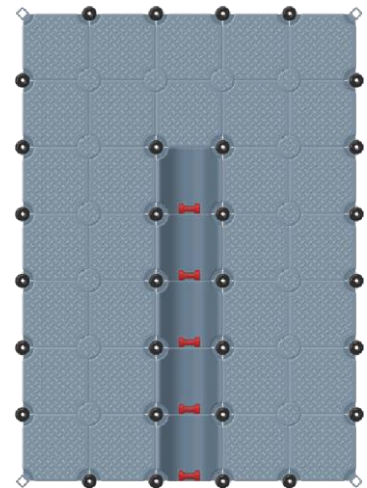
Jet Slider 350 H27 L



Jet Slider 350 H27 R L

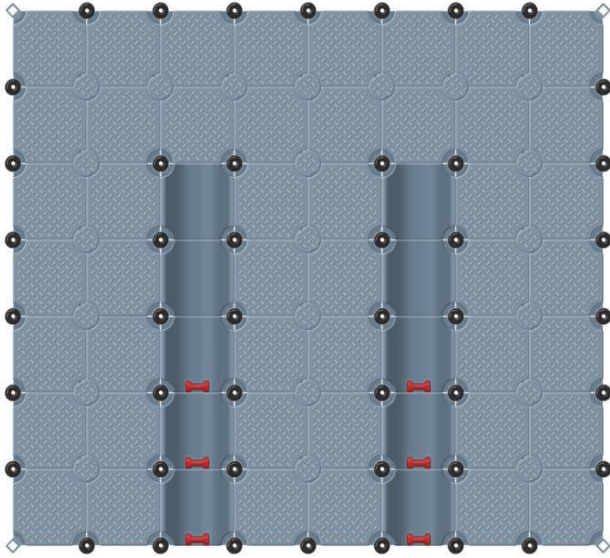


Jet Slider 350 H27 XL

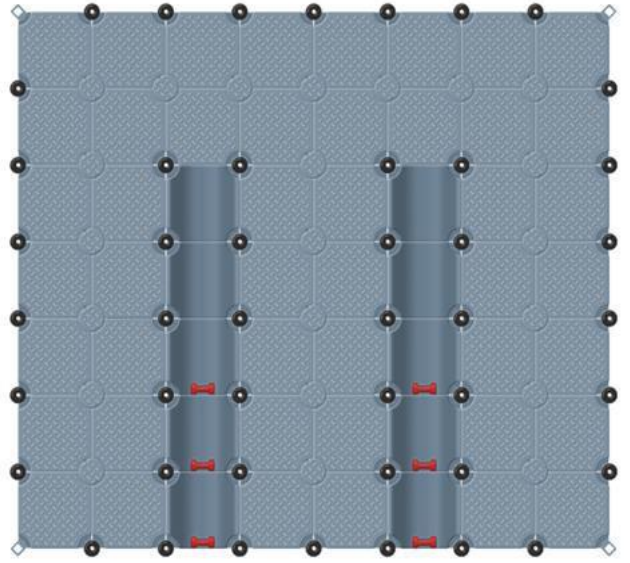


Jet Slider 350 H27 R XL

Jet Sliders

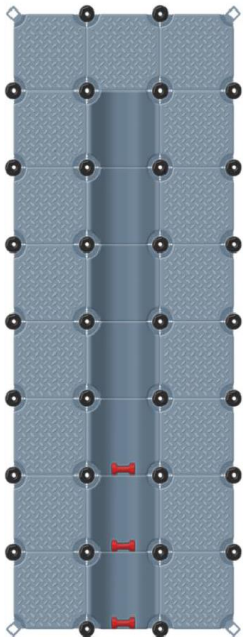


Jet Slider 350 Twin H27

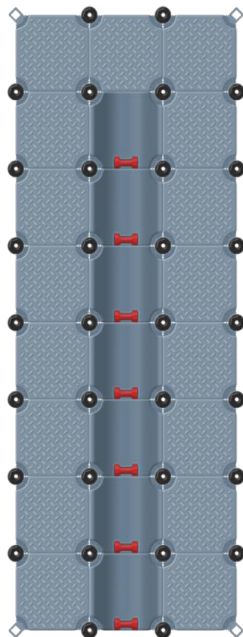


Jet Slider 350 Twin H40

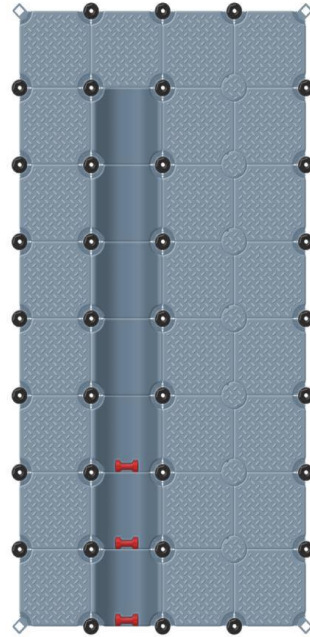
BULDOCK



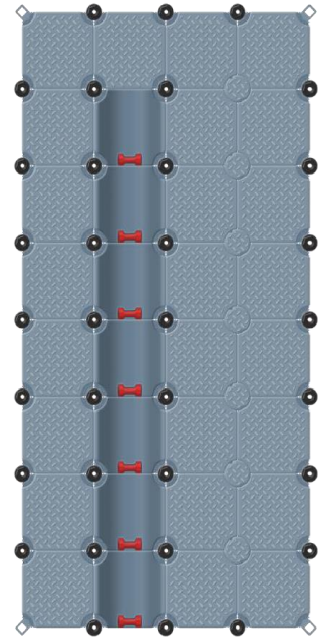
Jet Slider 400



Jet Slider 400 R

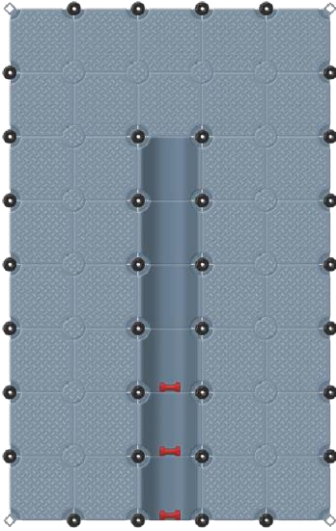


Jet Slider 400 L

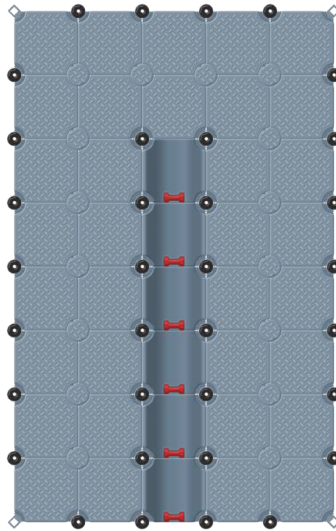


Jet Slider 400 R L

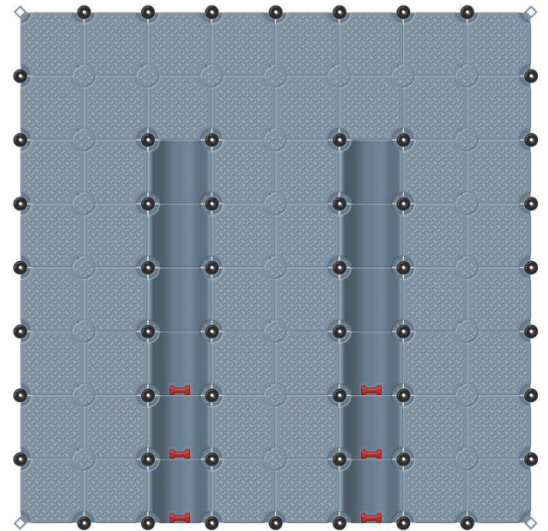
Jet Sliders



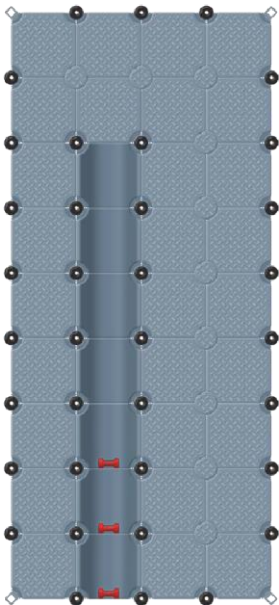
Jet Slider 400 XL



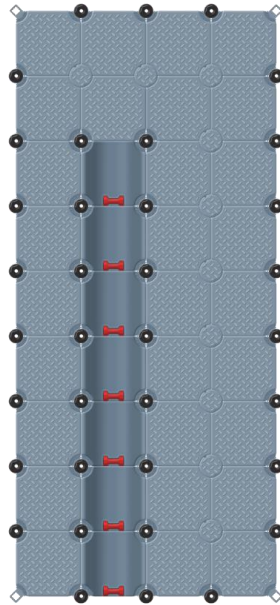
Jet Slider 400 R XL



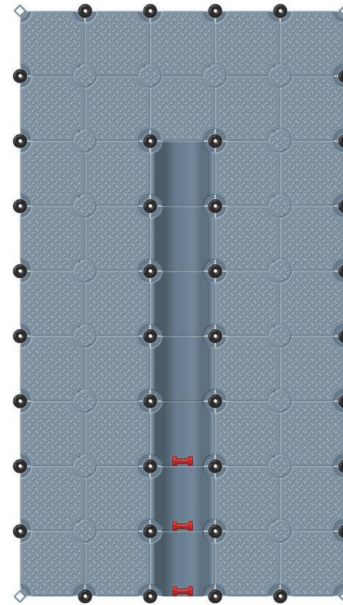
Jet Slider 400 Twin



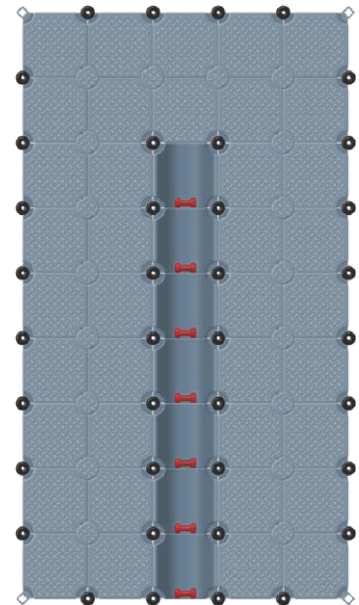
Jet Slider 450 L



Jet Slider 450 R L

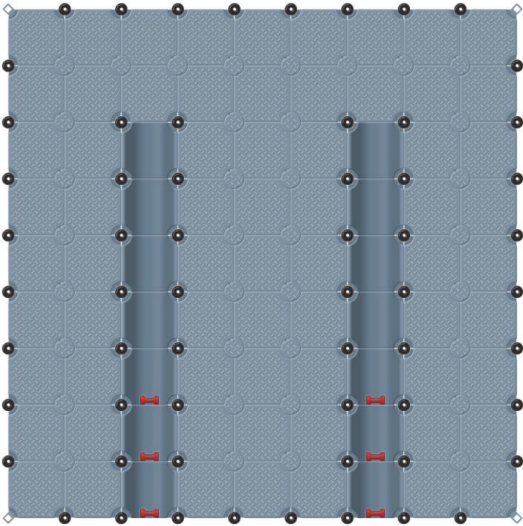


Jet Slider 450 XL

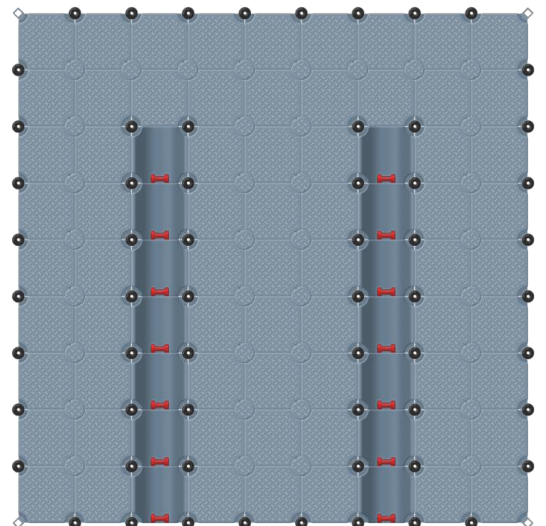


Jet Slider 450 R XL

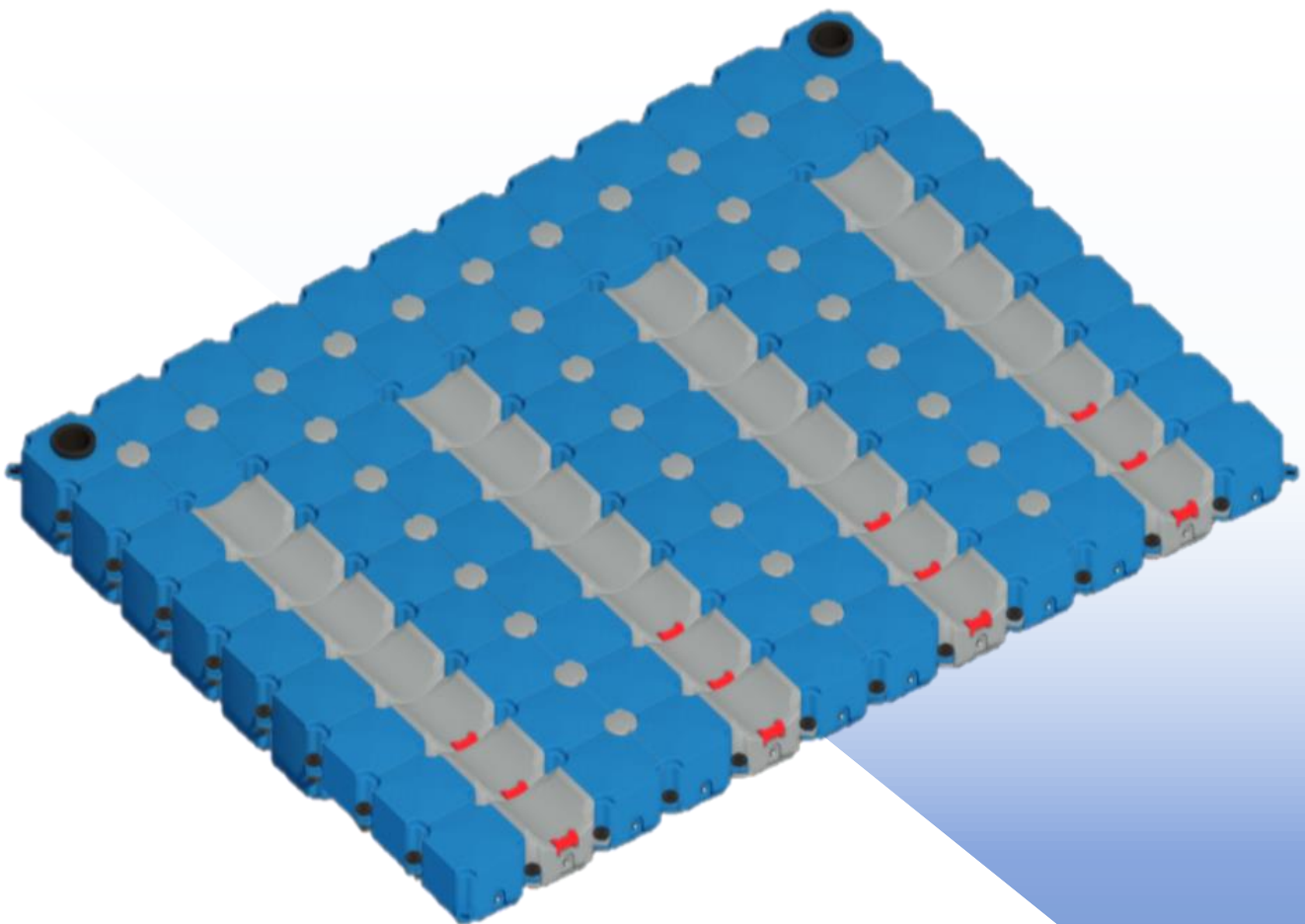
Jet Sliders



Jet Slider 450 Twin



Jet Slider 450 R Twin



Boat Sliders

BulDock's Boat Slider is a unique dry-dock system. Its' exceptiona design prevents any disproportionate strain on the hull by distributing the watercraft's weight evenly. The Boat Slider does not feature any moving parts that might be damaged or would require maintenance. The **BulDock Boat Slider** is lightweight, resistant to UV rays, chemicals and collision.

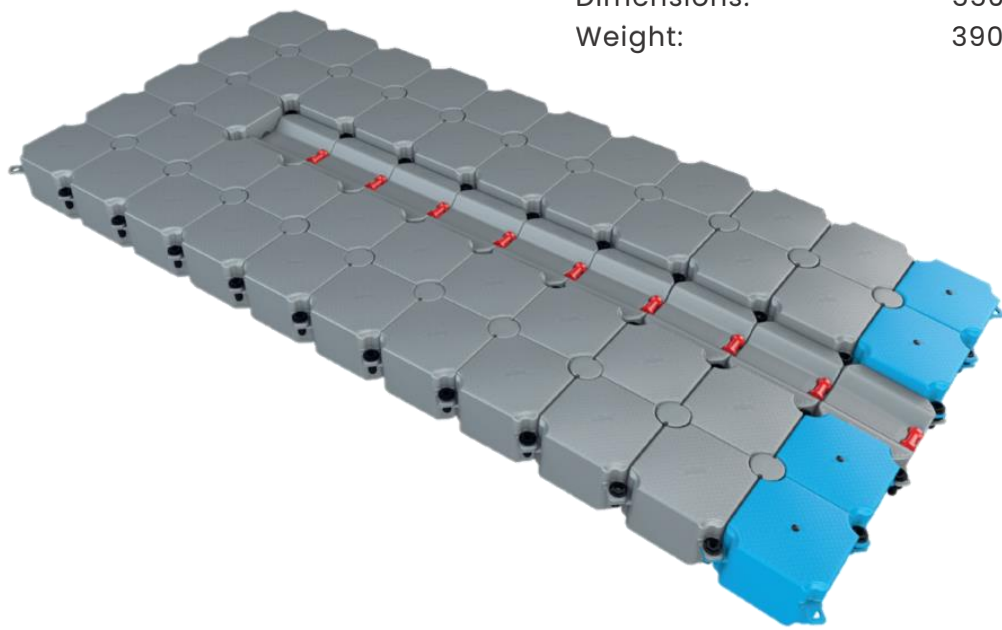


V – Boat Sliders

Boat Slider V-Slide 550 & 650

| Model: |
|----------------|
| BS V-SLIDE 550 |
| BS V-SLIDE 650 |

Material / Composition: High-density Polyethylene (HDPE)
 Rollers: Polyurethane, Inox Steel
 Surface: Anti-Slip
 Dimensions: 550/650 x250x40 cm (Length/Width/Height)
 Weight: 390 / 465 kg

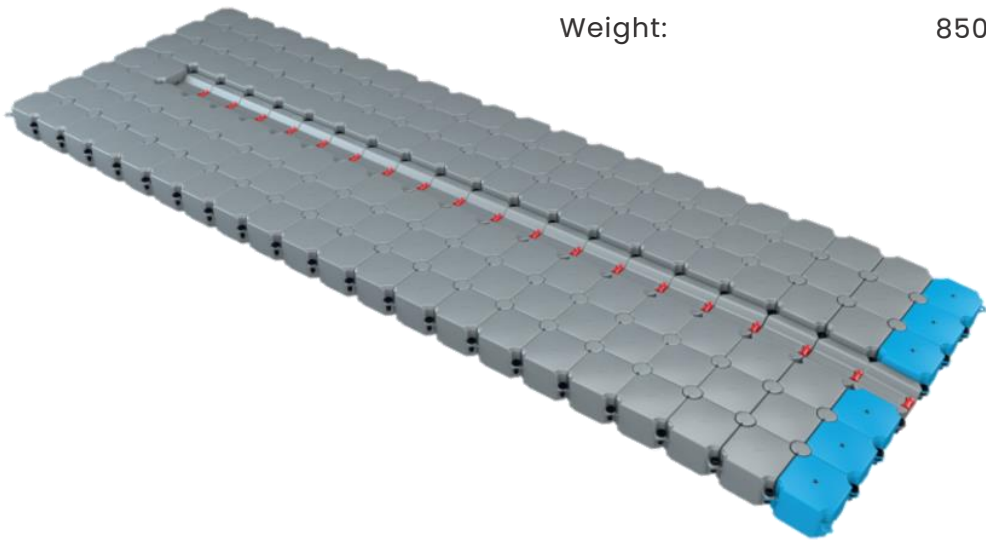


| | |
|-------------------|--------------------|
| Grey 2018BG021 | Beige 2018BG022 |
| Grey 2018BG023 | Beige 2018BG024 |

Boat Slider V-Slide 850 L & 1050 L

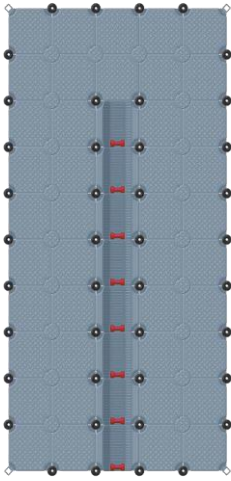
| Model: |
|-------------------|
| BS V-SLIDE 850 L |
| BS V-SLIDE 1050 L |

Material / Composition: High-density Polyethylene (HDPE)
 Rollers: Polyurethane, Inox Steel
 Surface: Anti-Slip
 Dimensions: 850/1050 x350x40 cm (Length/Width/Height)
 Weight: 850 / 1050 kg

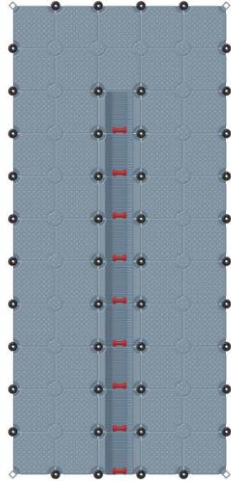


| | |
|-------------------|--------------------|
| Grey 2020BG025 | Beige 2020BG026 |
| Grey 2020BG027 | Beige 2020BG028 |

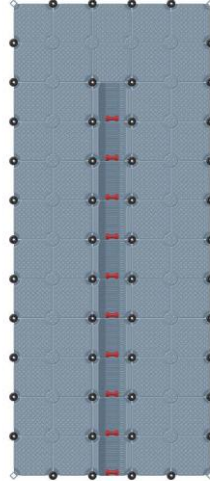
V – Boat Sliders



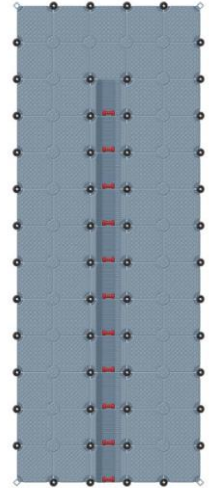
Boat Slider V-Slide 500



Boat Slider V-Slide 550

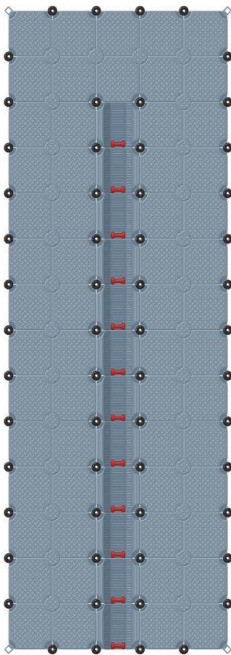


Boat Slider V-Slide 600

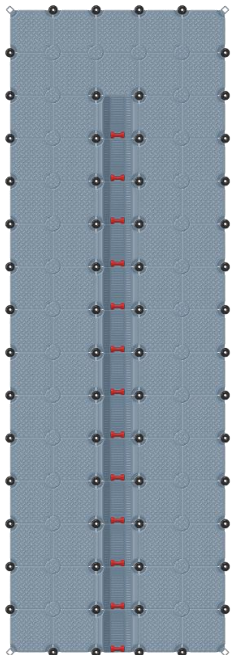


Boat Slider V-Slide 650

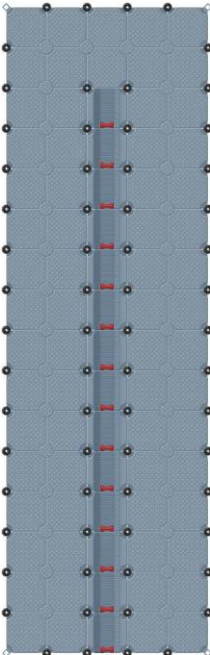
BULDOCK



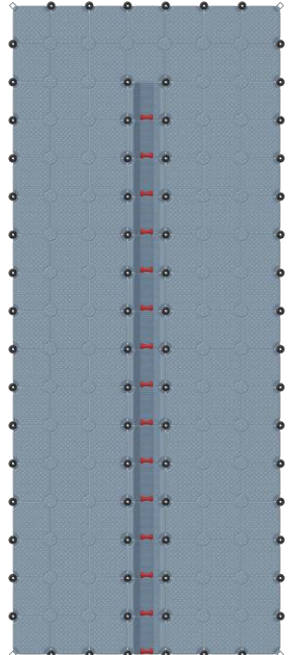
Boat Slider V-Slide 700



Boat Slider V-Slide 750

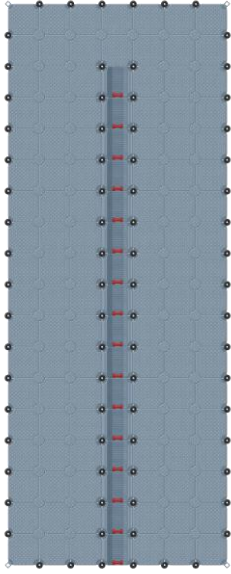


Boat Slider V-Slide 800

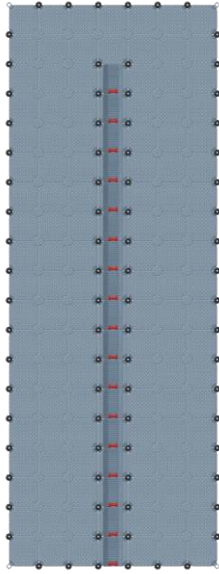


Boat Slider V-Slide 850 L

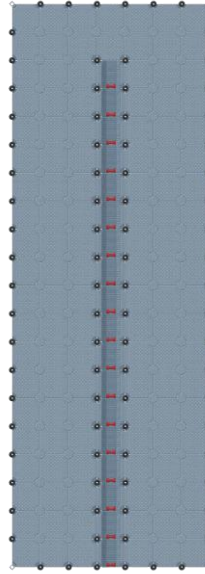
V - Boat Sliders



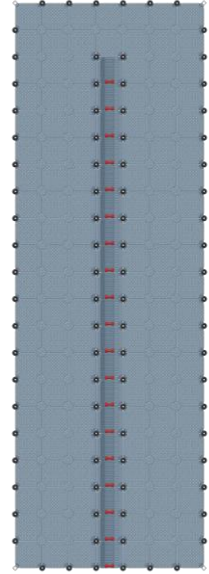
Boat Slider V-Slide 900 L



Boat Slider V-Slide 950 L

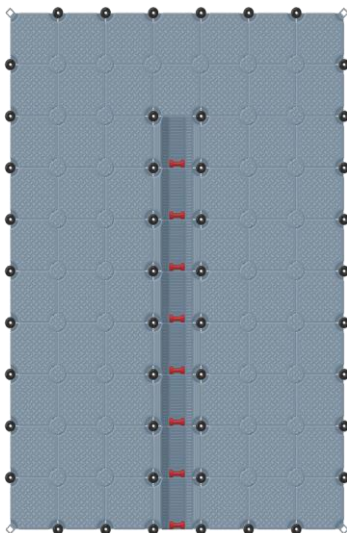


Boat Slider V-Slide 1000 L

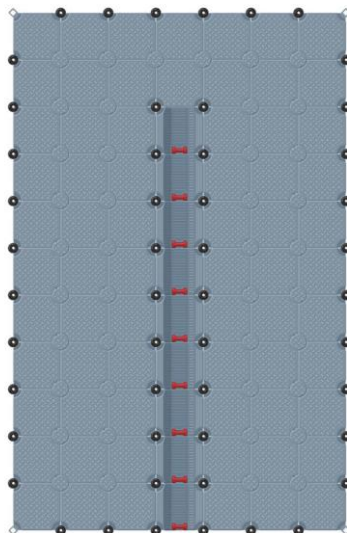


Boat Slider V-Slide 1050 L

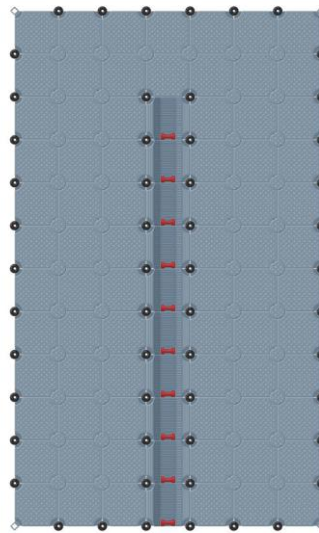
BULDOCK



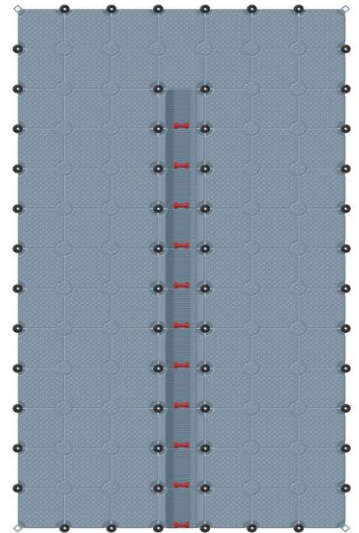
Boat Slider V-Slide 500 L



Boat Slider V-Slide 550 L

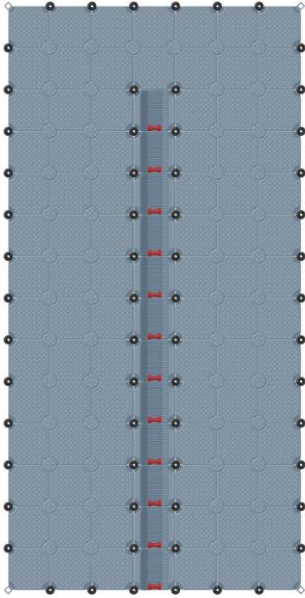


Boat Slider V-Slide 600 L

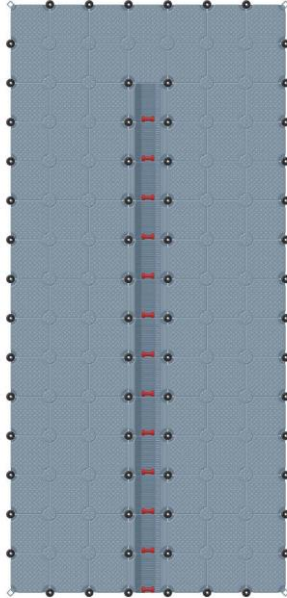


Boat Slider V-Slide 650 L

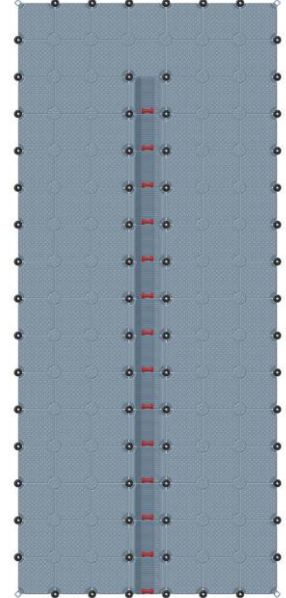
V - Boat Sliders



Boat Slider V-Slide 700 L

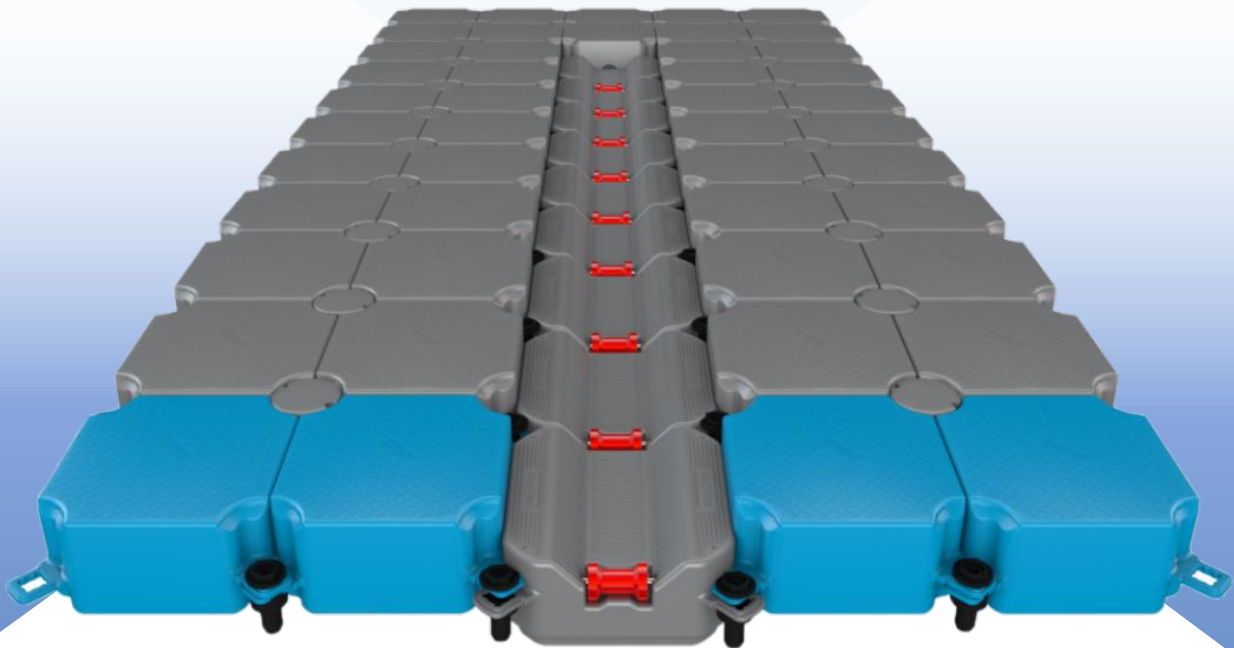


Boat Slider V-Slide 750 L



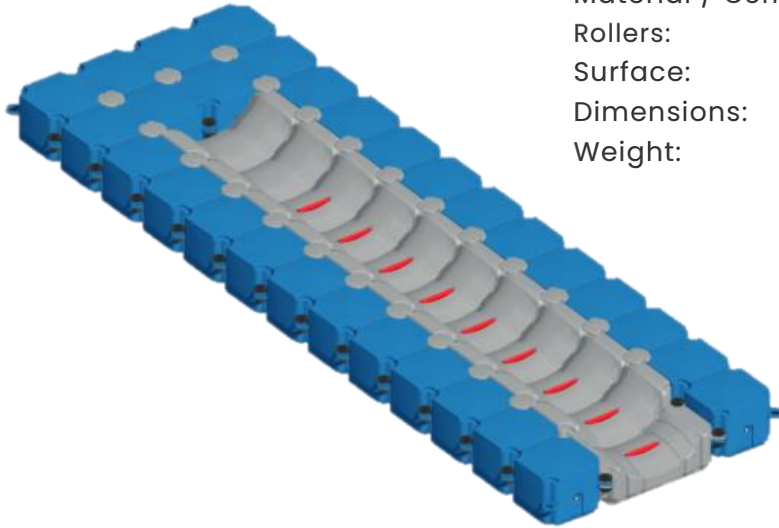
Boat Slider V-Slide 800 L

BULDOCK



U – Boat Sliders

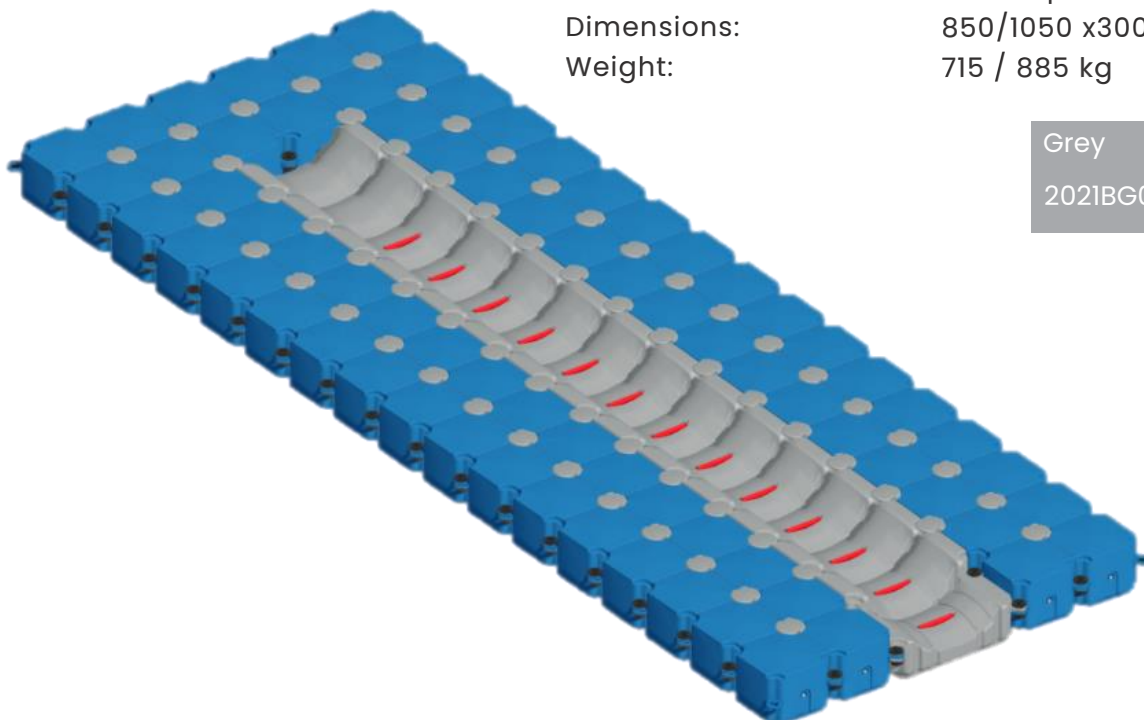
Boat Slider U-Slide 550 & 650



Material / Composition: High-density Polyethylene (HDPE)
 Rollers: Polyurethane, Inox Steel
 Surface: Anti-Slip
 Dimensions: 550/650 x200x40 cm (Length/Width/Height)
 Weight: 303 / 357 kg

| | |
|---------------|---------------|
| Grey | Grey |
| 2021BG007 550 | 2021BG009 650 |

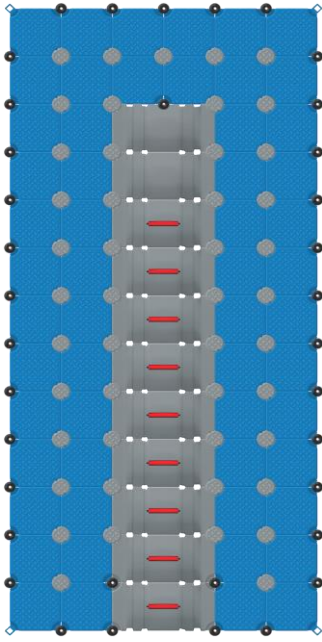
Boat Slider U-Slide 850 L & 1050 L



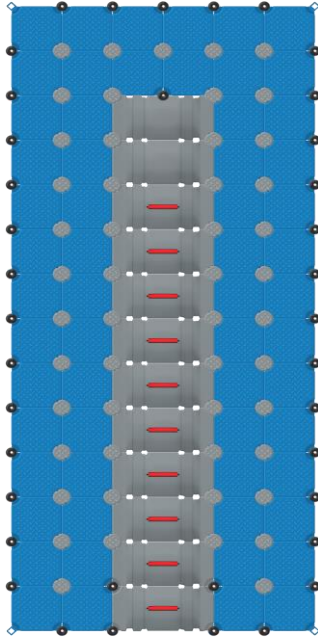
Material / Composition: High-density Polyethylene (HDPE)
 Rollers: Polyurethane, Inox Steel
 Surface: Anti-Slip
 Dimensions: 850/1050 x300x40 cm (Length/Width/Height)
 Weight: 715 / 885 kg

| | |
|---------------|----------------|
| Grey | Grey |
| 2021BG011 850 | 2021BG013 1050 |

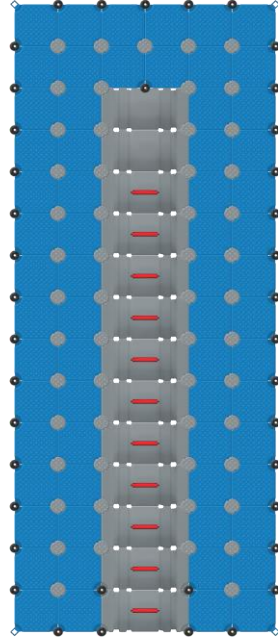
U - Boat Sliders



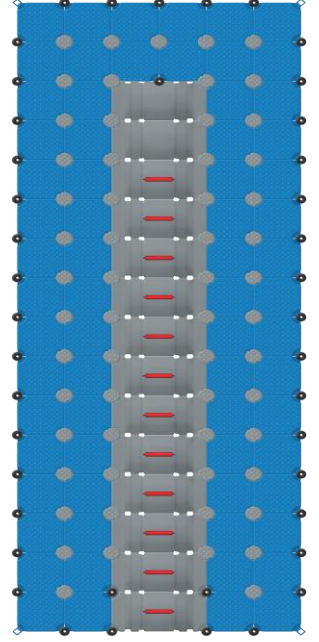
Boat Slider U-Slide 650 L



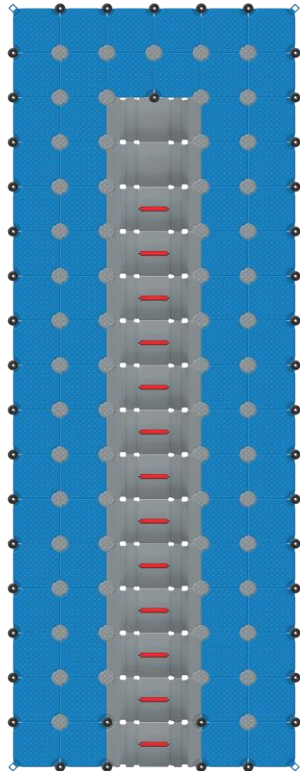
Boat Slider U-Slide 700 L



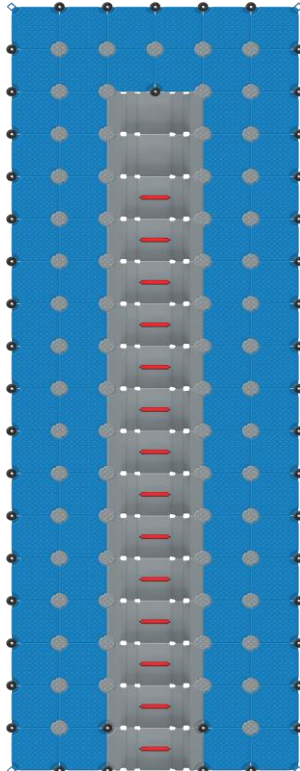
Boat Slider U-Slide 750 L



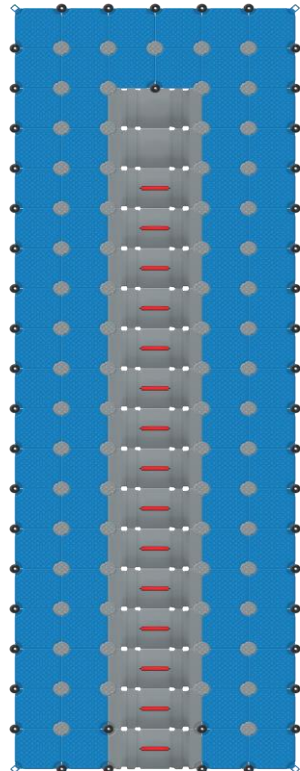
Boat Slider U-Slide 800 L



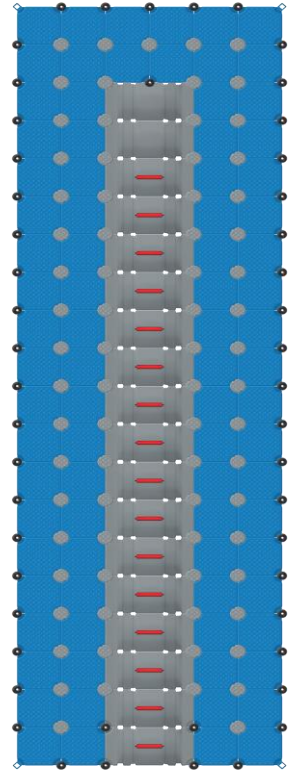
Boat Slider U-Slide 850 L



Boat Slider U-Slide 900 L

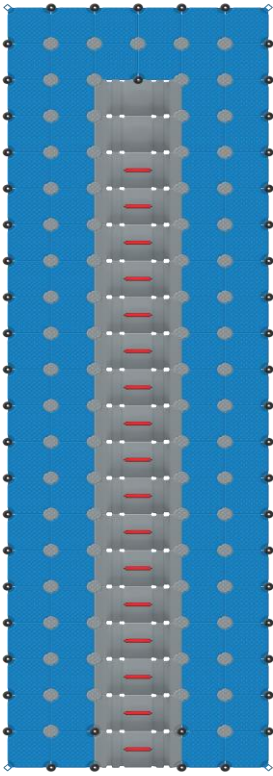


Boat Slider U-Slide 950 L

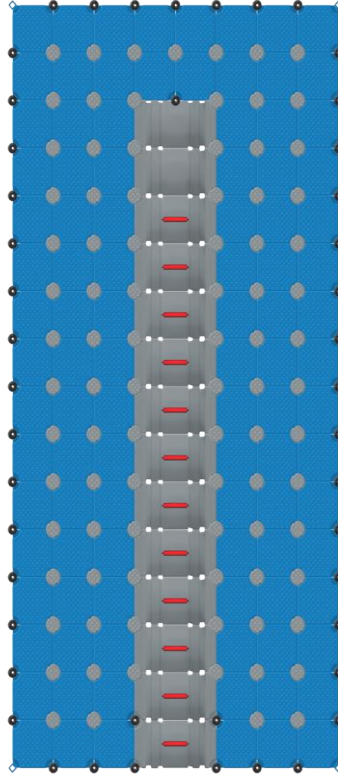


Boat Slider U-Slide 1000 L

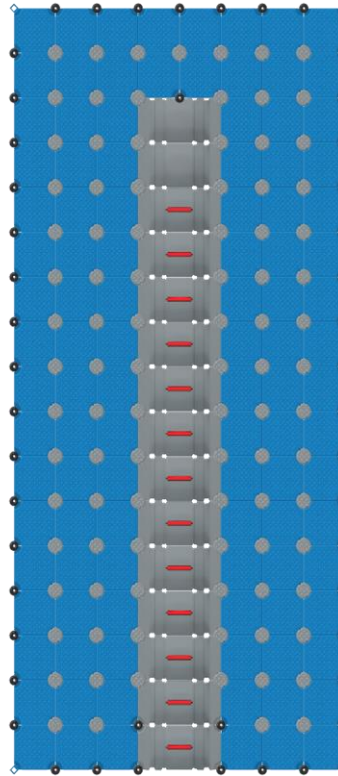
U – Boat Sliders



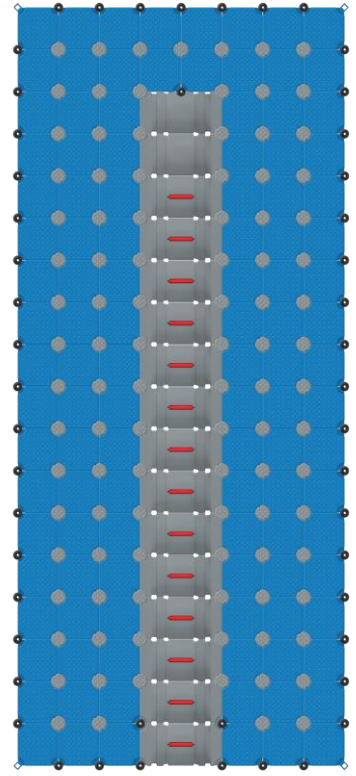
Boat Slider U-Slide 1050 L



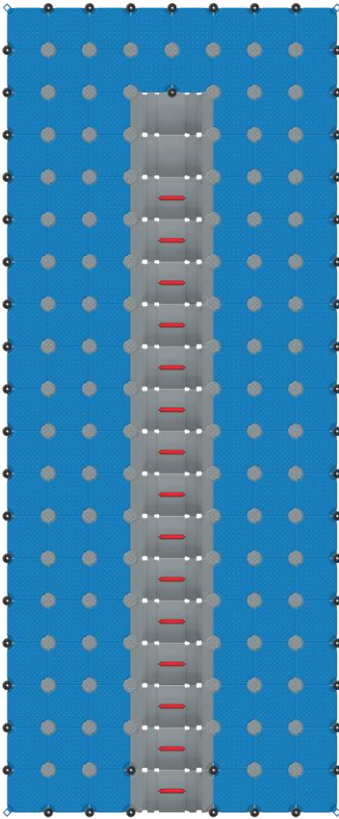
Boat Slider U-Slide 800 XL



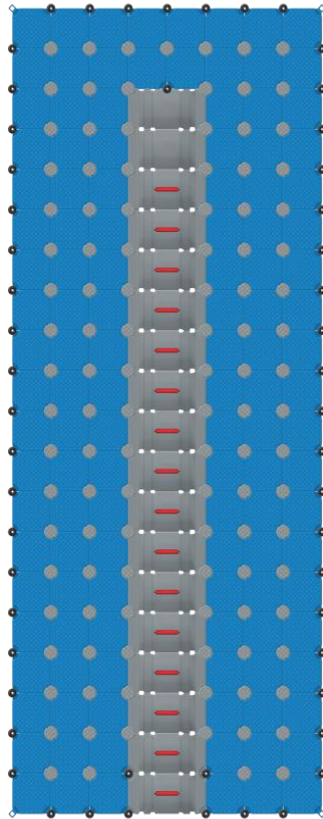
Boat Slider U-Slide 850 XL



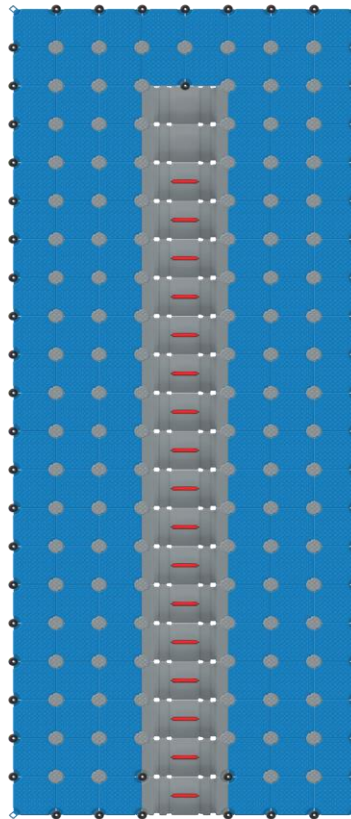
Boat Slider U-Slide 900 XL



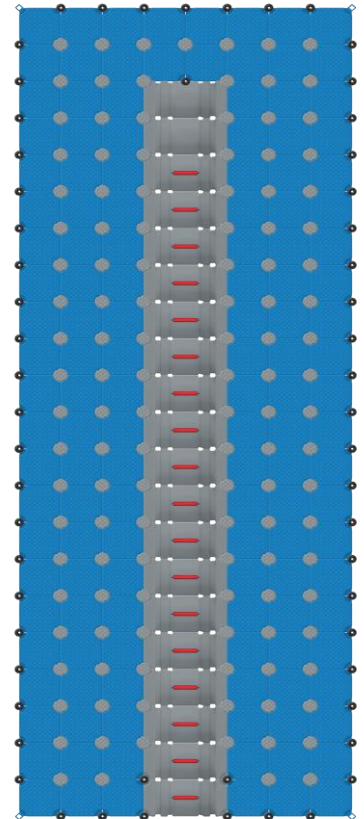
Boat Slider U-Slide 950 XL



Boat Slider U-Slide 1000 XL

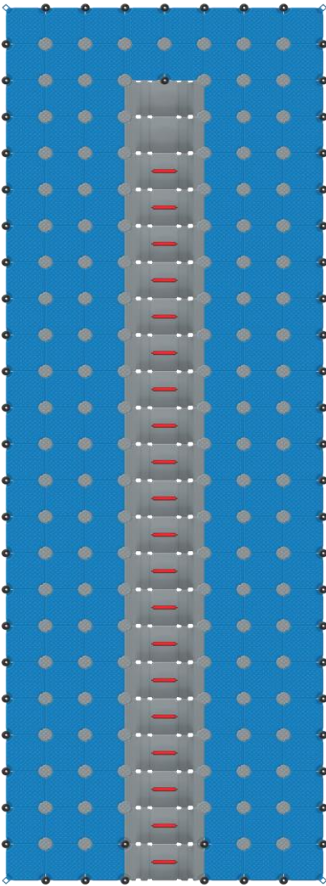


Boat Slider U-Slide 1050 XL

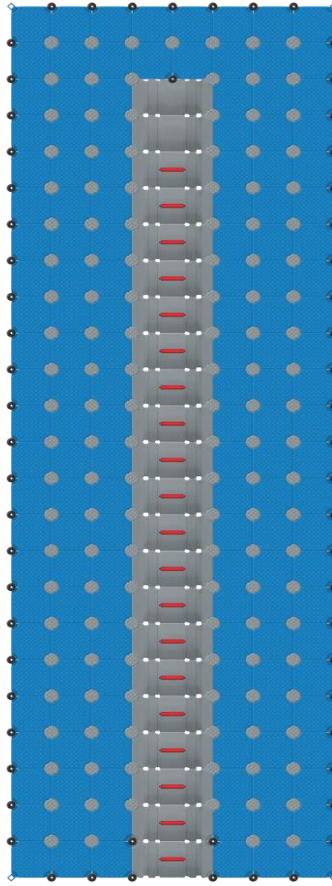


Boat Slider U-Slide 1100 XL

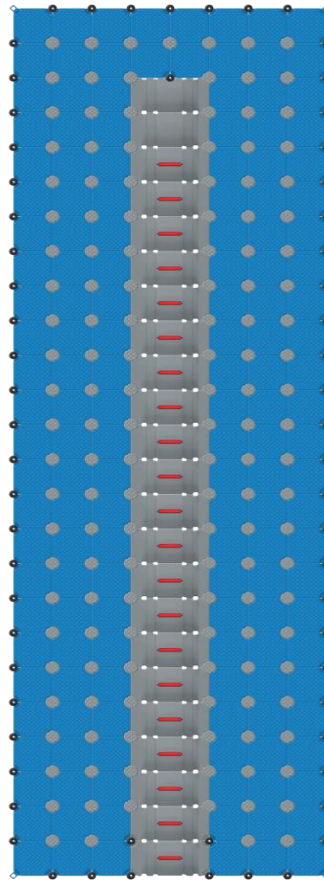
U – Boat Sliders



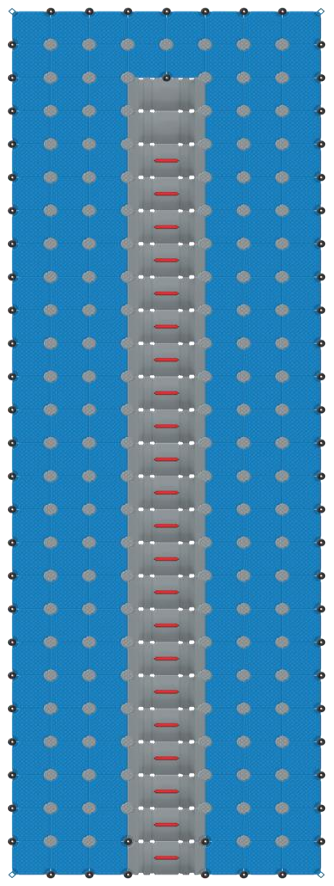
Boat Slider U-Slide 1150 XL



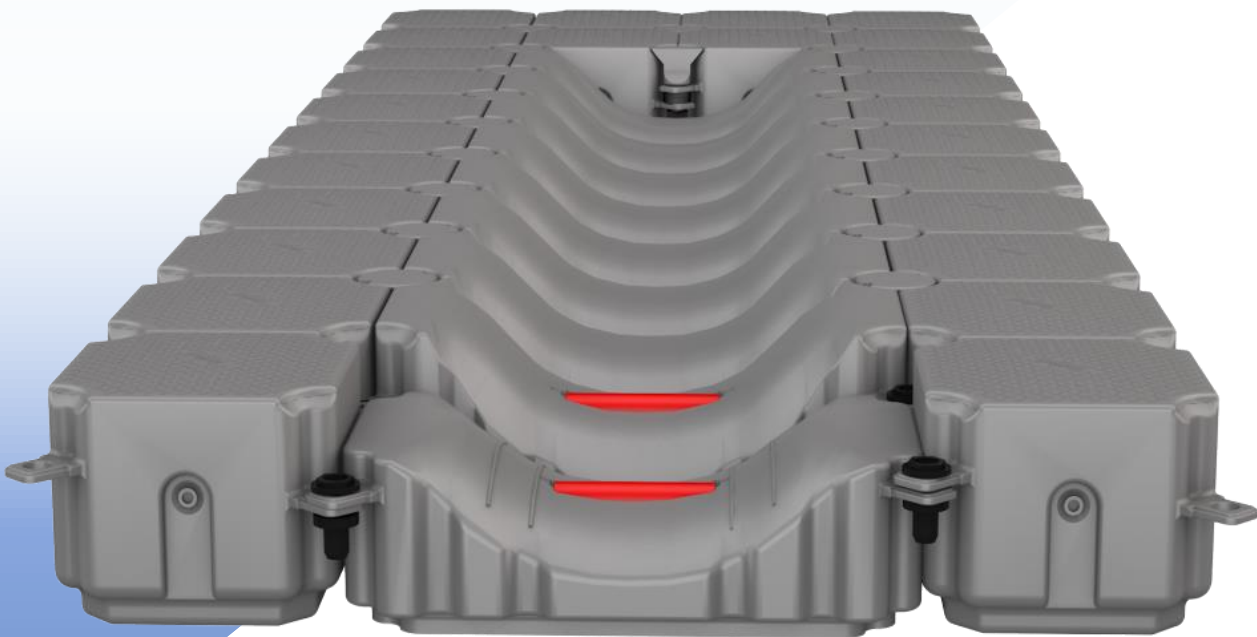
Boat Slider U-Slide 1200 XL



Boat Slider U-Slide 1250 XL



Boat Slider U-Slide 1300 XL



Request a quote
Let's build your dock!

Kontakt

Area maris d.o.o.
Trg kralja Tomislava 7, 52100 Pula
www.areamaris.hr , info@areamaris.hr

Get in touch

office@buldock.com
+359 878 333 878



Learn more about **BulDock** products
on our website

www.buldock.com